

Datasheet for ABIN2590165
anti-BDH1 antibody (FITC)[Go to Product page](#)

1 Image

Overview

Quantity:	100 µg
Target:	BDH1
Reactivity:	Human
Host:	Rabbit
Clonality:	Polyclonal
Conjugate:	This BDH1 antibody is conjugated to FITC
Application:	Western Blotting (WB), ELISA, Immunohistochemistry (IHC), Immunohistochemistry (Paraffin-embedded Sections) (IHC (p))

Product Details

Immunogen:	Recombinant human D-beta-hydroxybutyrate dehydrogenase, mitochondrial protein. Type of Immunogen: Recombinant protein
Isotype:	IgG
Specificity:	Human Beta-Hydroxybutyrate Dehydrogenase
Purification:	Caprylic acid and ammonium sulfate precipitation

Target Details

Target:	BDH1
Alternative Name:	SDR9C1 / BDH1 (BDH1 Products)
Background:	Name/Gene ID: BDH1

Target Details

Synonyms: BDH1, BDH, SDR9C1

Gene ID: 622

Pathways: [Response to Growth Hormone Stimulus](#)

Application Details

Application Notes: Approved: ELISA, IHC, IHC-P, WB

Usage: The applications listed have been tested for the unconjugated form of this product.
Other forms have not been tested.

Comment: Target Species of Antibody: Human

Restrictions: For Research Use only

Handling

Format: Liquid

Concentration: Lot specific

Buffer: PBS, pH 7.4, 0.03 % Proclin 300, 50 % glycerol.

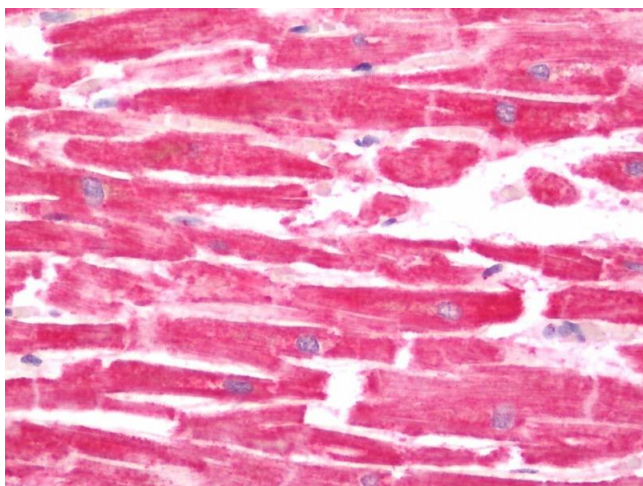
Preservative: ProClin

Precaution of Use: This product contains ProClin: a POISONOUS AND HAZARDOUS SUBSTANCE which should be handled by trained staff only.

Handling Advice: Avoid freeze-thaw cycles.

Storage: -20 °C, -80 °C

Storage Comment: Aliquot and store at -20°C or -80°C. Avoid freeze-thaw cycles.



Immunohistochemistry (Paraffin-embedded Sections)

Image 1. Human Heart: Formalin-Fixed, Paraffin-Embedded (FFPE). This image was taken for the unconjugated form of this product. Other forms have not been tested.