

Datasheet for ABIN2591770  
**anti-Casein antibody (FITC)**[Go to Product page](#)

## 1 Image

## Overview

Quantity:	100 µg
Target:	Casein (CASA)
Reactivity:	Human
Host:	Rabbit
Clonality:	Polyclonal
Conjugate:	This Casein antibody is conjugated to FITC
Application:	ELISA, Immunohistochemistry (Paraffin-embedded Sections) (IHC (p)), Western Blotting (WB), Immunohistochemistry (IHC)

## Product Details

Immunogen:	Human casein protein. Type of Immunogen: Purified protein
Isotype:	IgG
Specificity:	Human Casein
Purification:	Caprylic acid and ammonium sulfate precipitation

## Target Details

Target:	Casein (CASA)
Alternative Name:	Casein ( <a href="#">CASA Products</a> )

## Application Details

Application Notes:	Approved: ELISA, IHC, IHC-P, WB
	Usage: The applications listed have been tested for the unconjugated form of this product. Other forms have not been tested.

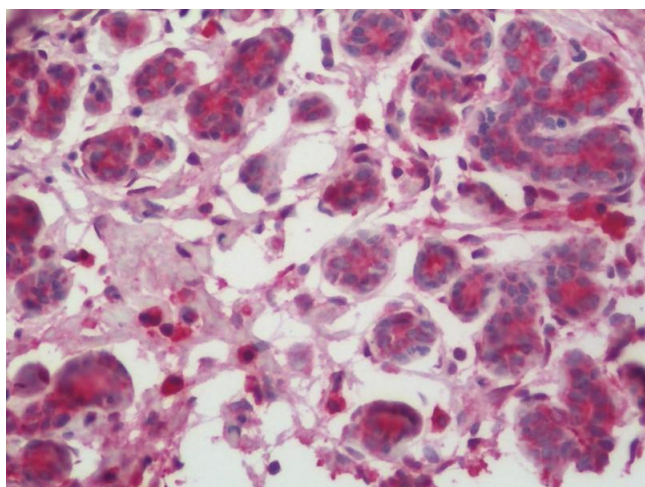
Comment:	Target Species of Antibody: Human
----------	-----------------------------------

Restrictions:	For Research Use only
---------------	-----------------------

## Handling

Format:	Liquid
Concentration:	Lot specific
Buffer:	PBS, pH 7.4, 0.03 % Proclin 300, 50 % glycerol.
Preservative:	ProClin
Precaution of Use:	This product contains ProClin: a POISONOUS AND HAZARDOUS SUBSTANCE which should be handled by trained staff only.
Handling Advice:	Avoid freeze-thaw cycles.
Storage:	-20 °C, -80 °C
Storage Comment:	Aliquot and store at -20°C or -80°C. Avoid freeze-thaw cycles.

## Images



### Immunohistochemistry (Paraffin-embedded Sections)

**Image 1.** Human Breast: Formalin-Fixed, Paraffin-Embedded (FFPE). This image was taken for the unconjugated form of this product. Other forms have not been tested.