

Datasheet for ABIN2591772
anti-Casein antibody (Biotin)[Go to Product page](#)

1 Image

Overview

Quantity:	100 µg
Target:	Casein (CASA)
Reactivity:	Human
Host:	Rabbit
Clonality:	Polyclonal
Conjugate:	This Casein antibody is conjugated to Biotin
Application:	ELISA, Immunohistochemistry (Paraffin-embedded Sections) (IHC (p)), Western Blotting (WB), Immunohistochemistry (IHC)

Product Details

Immunogen:	Human casein protein. Type of Immunogen: Purified protein
Isotype:	IgG
Specificity:	Human Casein
Purification:	Caprylic acid and ammonium sulfate precipitation

Target Details

Target:	Casein (CASA)
Alternative Name:	Casein (CASA Products)

Application Details

Application Notes:	Approved: ELISA, IHC, IHC-P, WB
	Usage: The applications listed have been tested for the unconjugated form of this product. Other forms have not been tested.

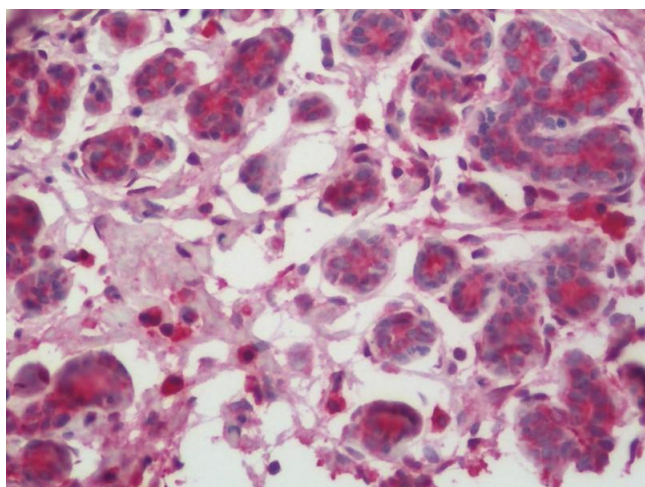
Comment:	Target Species of Antibody: Human
----------	-----------------------------------

Restrictions:	For Research Use only
---------------	-----------------------

Handling

Format:	Liquid
Concentration:	Lot specific
Buffer:	PBS, pH 7.4, 0.03 % Proclin 300, 50 % glycerol.
Preservative:	ProClin
Precaution of Use:	This product contains ProClin: a POISONOUS AND HAZARDOUS SUBSTANCE which should be handled by trained staff only.
Handling Advice:	Avoid freeze-thaw cycles.
Storage:	-20 °C, -80 °C
Storage Comment:	Aliquot and store at -20°C or -80°C. Avoid freeze-thaw cycles.

Images



Immunohistochemistry (Paraffin-embedded Sections)

Image 1. Human Breast: Formalin-Fixed, Paraffin-Embedded (FFPE). This image was taken for the unconjugated form of this product. Other forms have not been tested.