

Datasheet for ABIN2591916
anti-Calpastatin antibody (FITC)[Go to Product page](#)

2 Images

Overview

Quantity:	100 µg
Target:	Calpastatin (CAST)
Reactivity:	Human
Host:	Rabbit
Clonality:	Polyclonal
Conjugate:	This Calpastatin antibody is conjugated to FITC
Application:	Western Blotting (WB), ELISA, Immunohistochemistry (IHC), Immunohistochemistry (Paraffin-embedded Sections) (IHC (p))

Product Details

Immunogen:	Recombinant human Calpastatin protein. Type of Immunogen: Recombinant protein
Isotype:	IgG
Specificity:	Human CAST / Calpastatin
Purification:	Caprylic acid and ammonium sulfate precipitation

Target Details

Target:	Calpastatin (CAST)
Alternative Name:	CAST / Calpastatin (CAST Products)
Background:	Name/Gene ID: CAST

Target Details

Synonyms: CAST, Calpastatin, BS-17, Calpain inhibitor, Sperm BS-17 component

Gene ID: 831

Application Details

Application Notes: Approved: ELISA, IHC, IHC-P, WB

Usage: The applications listed have been tested for the unconjugated form of this product.
Other forms have not been tested.

Comment: Target Species of Antibody: Human

Restrictions: For Research Use only

Handling

Format: Liquid

Concentration: Lot specific

Buffer: PBS, pH 7.4, 0.03 % Proclin 300, 50 % glycerol.

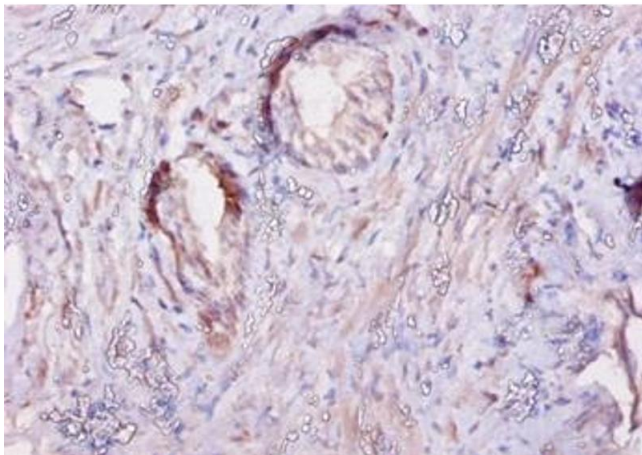
Preservative: ProClin

Precaution of Use: This product contains ProClin: a POISONOUS AND HAZARDOUS SUBSTANCE which should be handled by trained staff only.

Handling Advice: Avoid freeze-thaw cycles.

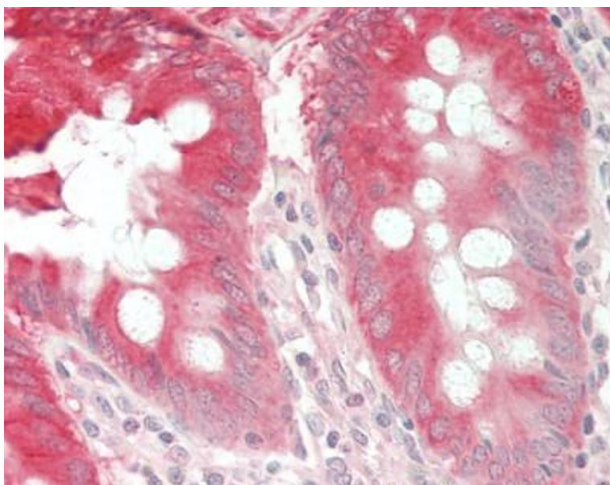
Storage: -20 °C, -80 °C

Storage Comment: Aliquot and store at -20°C or -80°C. Avoid freeze-thaw cycles.



Immunohistochemistry

Image 1. Immunohistochemistry of paraffin-embedded human prostate using CAST / Calpastatin antibody at dilution of 1:10. This image was taken for the unconjugated form of this product. Other forms have not been tested.



Immunohistochemistry (Paraffin-embedded Sections)

Image 2. Human Colon: Formalin-Fixed, Paraffin-Embedded (FFPE). This image was taken for the unconjugated form of this product. Other forms have not been tested.