



[Go to Product page](#)

Datasheet for ABIN2594504
anti-CECR1 antibody (AA 1-270)

1 Image

Overview

Quantity:	50 µg
Target:	CECR1
Binding Specificity:	AA 1-270
Reactivity:	Human
Host:	Rabbit
Clonality:	Polyclonal
Conjugate:	This CECR1 antibody is un-conjugated
Application:	Western Blotting (WB), Immunohistochemistry (IHC), Immunohistochemistry (Paraffin-embedded Sections) (IHC (p))

Product Details

Brand:	IHC-plus™
Immunogen:	Full length human CECR1, aa1-270 (NP_803124.1). Type of Immunogen: Recombinant protein
Isotype:	IgG
Specificity:	Human CECR1
Purification:	Affinity purified

Target Details

Target:	CECR1
---------	-------

Target Details

Alternative Name: CECR1 ([CECR1 Products](#))

Background: Name/Gene ID: CECR1

Synonyms: CECR1, Adenosine deaminase 2, Adenosine deaminase CECR1, ADGF, ADA2, IDGFL

Gene ID: 51816

NCBI Accession: [NP_803124](#)

Pathways: [Ribonucleoside Biosynthetic Process](#)

Application Details

Application Notes: Approved: IHC, IHC-P (5 µg/mL), WB

Comment: Target Species of Antibody: Human

Restrictions: For Research Use only

Handling

Format: Liquid

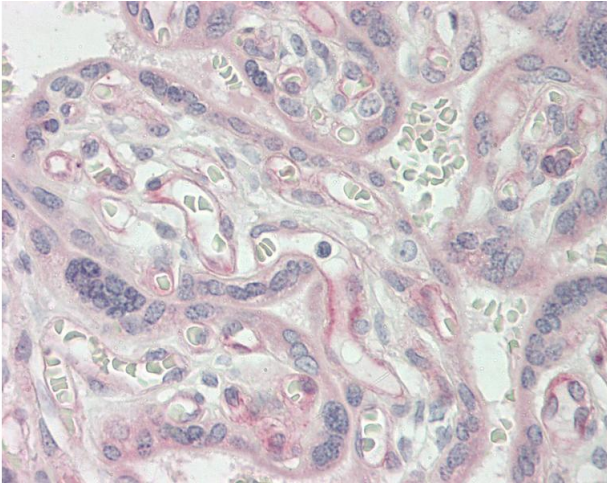
Concentration: Lot specific

Buffer: PBS, pH 7.4.

Handling Advice: Aliquot to avoid repeated freezing and thawing.

Storage: 4 °C, -20 °C

Storage Comment: May be stored at 4°C for short-term only. Aliquot to avoid freeze-thaw cycles. Store at -20°C. Aliquots are stable for at least 1 year.



Immunohistochemistry

Image 1. Human Placenta: Formalin-Fixed, Paraffin-Embedded (FFPE)