

Datasheet for ABIN2594673

## anti-Complement Factor B antibody (HRP)



[Go to Product page](#)

### 1 Image

#### Overview

Quantity:	100 µg
Target:	Complement Factor B (CFB)
Reactivity:	Human
Host:	Rabbit
Clonality:	Polyclonal
Conjugate:	This Complement Factor B antibody is conjugated to HRP
Application:	Western Blotting (WB), Immunohistochemistry (IHC), ELISA, Immunohistochemistry (Paraffin-embedded Sections) (IHC (p))

#### Product Details

Immunogen:	Recombinant human Complement factor B protein.  Type of Immunogen: Recombinant protein
Isotype:	IgG
Specificity:	Human CFB / Complement Factor B
Purification:	Caprylic acid and ammonium sulfate precipitation

#### Target Details

Target:	Complement Factor B (CFB)
Alternative Name:	CFB / Complement Factor B ( <a href="#">CFB Products</a> )
Background:	Name/Gene ID: CFB

## Target Details

Subfamily: Serine S1  
Family: Protease

Synonyms: CFB, AHUS4, B-factor, properdin, C3/C5 convertase, CFAB, C3 proaccelerator, C3 proactivator, Complement factor B, Complement protein Factor B, Glycine-rich beta-glycoprotein, GBG, Factor B, FB, Glycine-rich beta glycoprotein, PBF2, BF, BFD, FBI12, H2-Bf, Properdin factor B

Gene ID: 629

Pathways: [Complement System](#), [Proton Transport](#), [Ribonucleoside Biosynthetic Process](#)

## Application Details

Application Notes: Approved: ELISA, IHC, IHC-P, WB  
  
Usage: The applications listed have been tested for the unconjugated form of this product. Other forms have not been tested.

Comment: Target Species of Antibody: Human

Restrictions: For Research Use only

## Handling

Format: Liquid

Concentration: Lot specific

Buffer: PBS, pH 7.4, 0.03 % Proclin 300, 50 % glycerol.

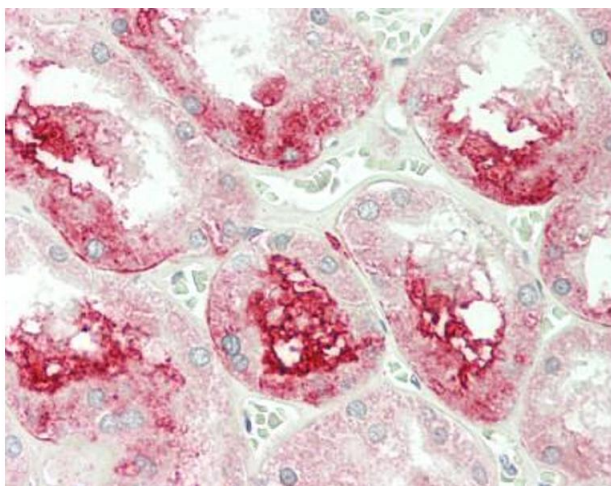
Preservative: ProClin

Precaution of Use: This product contains ProClin: a POISONOUS AND HAZARDOUS SUBSTANCE which should be handled by trained staff only.

Handling Advice: Avoid freeze-thaw cycles.

Storage: -20 °C,-80 °C

Storage Comment: Aliquot and store at -20°C or -80°C. Avoid freeze-thaw cycles.



#### Immunohistochemistry (Paraffin-embedded Sections)

**Image 1.** Human Kidney: Formalin-Fixed, Paraffin-Embedded (FFPE). This image was taken for the unconjugated form of this product. Other forms have not been tested.