

Datasheet for ABIN2595893  
**anti-COL6A2 antibody (AA 1-425)**



[Go to Product page](#)

1 Image

## Overview

Quantity:	50 µg
Target:	COL6A2
Binding Specificity:	AA 1-425
Reactivity:	Human
Host:	Mouse
Clonality:	Monoclonal
Conjugate:	This COL6A2 antibody is un-conjugated
Application:	Western Blotting (WB), ELISA, Immunohistochemistry (IHC), Immunohistochemistry (Paraffin-embedded Sections) (IHC (p))

## Product Details

Brand:	IHC-plus™
Immunogen:	COL6A2 (AAH02484, aa1-425 full-length recombinant protein with GST tag. MW of the GST tag alone is 26 KDa.  Type of Immunogen: GST fusion protein
Clone:	2C5-F2
Isotype:	IgG2a kappa
Specificity:	Human COL6A2 / Collagen VI
Purification:	Purified from ascites by Protein A

## Target Details

---

Target:	COL6A2
Alternative Name:	COL6A2 / Collagen VI alpha 2 ( <a href="#">COL6A2 Products</a> )
Background:	Name/Gene ID: COL6A2 Family: Collagen  Synonyms: COL6A2, Collagen alpha-2(VI) chain, Collagen, type VI, alpha 2, Collagen alpha 2(vi), PP3610
Gene ID:	1292

## Application Details

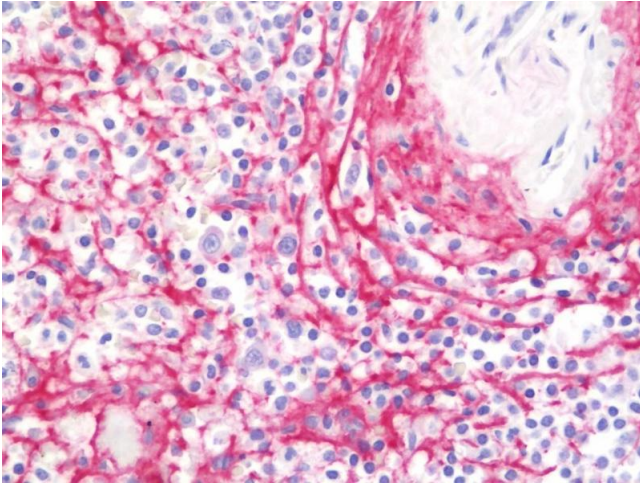
---

Application Notes:	Approved: ELISA, IHC, IHC-P (10 µg/mL), WB  Usage: Sandwich ELISA: Recombinant protein. Western Blot: Transfected lysate, Recombinant protein. Immunohistochemistry: Paraffin.
Comment:	Target Species of Antibody: Human
Restrictions:	For Research Use only

## Handling

---

Format:	Liquid
Concentration:	Lot specific
Buffer:	PBS, pH 7.4.
Handling Advice:	Aliquot to avoid repeated freezing and thawing.
Storage:	-20 °C
Storage Comment:	Store at -20°C or lower. Aliquot to avoid freeze-thaw cycles.



### Immunohistochemistry

**Image 1.** Anti-COL6A2 / Collagen VI antibody IHC staining of human spleen. Immunohistochemistry of formalin-fixed, paraffin-embedded tissue after heat-induced antigen retrieval. Antibody concentration 10 ug/ml.