

Datasheet for ABIN2596483
anti-CRABP1 antibody (Biotin)[Go to Product page](#)

1 Image

Overview

Quantity:	100 µg
Target:	CRABP1
Reactivity:	Human
Host:	Rabbit
Clonality:	Polyclonal
Conjugate:	This CRABP1 antibody is conjugated to Biotin
Application:	ELISA, Western Blotting (WB), Immunohistochemistry (IHC), Immunohistochemistry (Paraffin-embedded Sections) (IHC (p))

Product Details

Immunogen:	Recombinant human Cellular retinoic acid-binding protein 1 protein. Type of Immunogen: Recombinant protein
Isotype:	IgG
Specificity:	Human CRABP1 / CRABP
Purification:	Caprylic acid and ammonium sulfate precipitation

Target Details

Target:	CRABP1
Alternative Name:	CRABP1 / CRABP (CRABP1 Products)
Background:	Name/Gene ID: CRABP1

Target Details

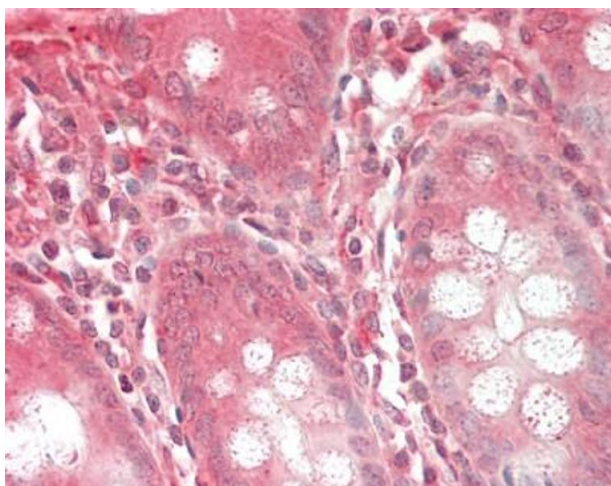
	Synonyms: CRABP1, CRABP-I, CRABPI, CRABP
Gene ID:	1381

Application Details

Application Notes:	Approved: ELISA, IHC, IHC-P, WB Usage: The applications listed have been tested for the unconjugated form of this product. Other forms have not been tested.
Comment:	Target Species of Antibody: Human
Restrictions:	For Research Use only

Handling

Format:	Liquid
Concentration:	Lot specific
Buffer:	PBS, pH 7.4, 0.03 % Proclin 300, 50 % glycerol.
Preservative:	ProClin
Precaution of Use:	This product contains ProClin: a POISONOUS AND HAZARDOUS SUBSTANCE which should be handled by trained staff only.
Handling Advice:	Avoid freeze-thaw cycles.
Storage:	-20 °C,-80 °C
Storage Comment:	Aliquot and store at -20°C or -80°C. Avoid freeze-thaw cycles.



Immunohistochemistry (Paraffin-embedded Sections)

Image 1. Human Colon: Formalin-Fixed, Paraffin-Embedded (FFPE). This image was taken for the unconjugated form of this product. Other forms have not been tested.