

Datasheet for ABIN2596767

anti-CS antibody (FITC)[Go to Product page](#)**1** Image

Overview

Quantity:	100 µg
Target:	CS
Reactivity:	Human
Host:	Rabbit
Clonality:	Polyclonal
Conjugate:	This CS antibody is conjugated to FITC
Application:	Western Blotting (WB), Immunohistochemistry (IHC), ELISA, Immunohistochemistry (Paraffin-embedded Sections) (IHC (p))

Product Details

Immunogen:	Recombinant human Citrate synthase, mitochondrial protein. Type of Immunogen: Recombinant protein
Isotype:	IgG
Specificity:	Human CS / Citrate Synthase
Purification:	Caprylic acid and ammonium sulfate precipitation

Target Details

Target:	CS
Alternative Name:	CS / Citrate Synthase (CS Products)
Background:	Name/Gene ID: CS

Target Details

Synonyms: CS, Citrate synthase, Citrate synthetase

Gene ID: 1431

Application Details

Application Notes: Approved: ELISA, IHC, IHC-P, WB

Usage: The applications listed have been tested for the unconjugated form of this product.
Other forms have not been tested.

Comment: Target Species of Antibody: Human

Restrictions: For Research Use only

Handling

Format: Liquid

Concentration: Lot specific

Buffer: PBS, pH 7.4, 0.03 % Proclin 300, 50 % glycerol.

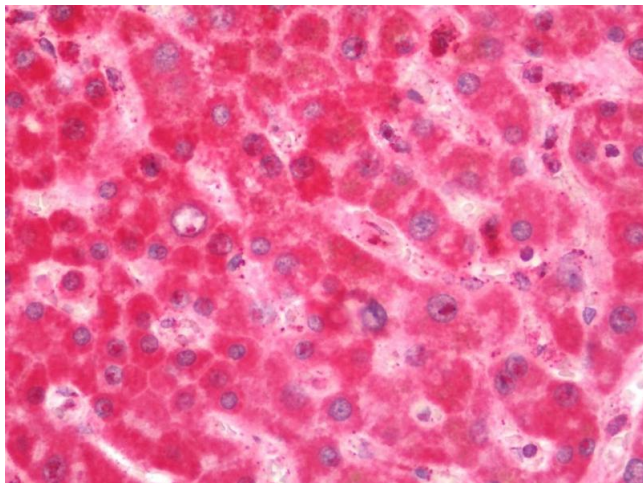
Preservative: ProClin

Precaution of Use: This product contains ProClin: a POISONOUS AND HAZARDOUS SUBSTANCE which should be handled by trained staff only.

Handling Advice: Avoid freeze-thaw cycles.

Storage: -20 °C, -80 °C

Storage Comment: Aliquot and store at -20°C or -80°C. Avoid freeze-thaw cycles.



Immunohistochemistry (Paraffin-embedded Sections)

Image 1. Human Liver: Formalin-Fixed, Paraffin-Embedded (FFPE). This image was taken for the unconjugated form of this product. Other forms have not been tested.