



[Go to Product page](#)

Datasheet for ABIN2597763

anti-Cytokeratin 8/18 antibody (FITC)

1 Image

Overview

Quantity:	250 µL
Target:	Cytokeratin 8/18
Reactivity:	Human
Host:	Mouse
Clonality:	Monoclonal
Conjugate:	This Cytokeratin 8/18 antibody is conjugated to FITC
Application:	Flow Cytometry (FACS), Immunohistochemistry (IHC), Immunohistochemistry (Paraffin-embedded Sections) (IHC (p)), Immunocytochemistry (ICC)

Product Details

Brand:	IHC-plus™
Immunogen:	Human breast cancer PMC 42 cells. Type of Immunogen: Cells
Clone:	CK 209
Isotype:	IgG1 kappa
Purification:	Protein A purified

Target Details

Target:	Cytokeratin 8/18
Alternative Name:	Cytokeratin 8+18 (Cytokeratin 8/18 Products)

Target Details

Background: This antibody detects: Cytokeratin 8+18

Application Details

Application Notes: Approved: Flo (2 - 10 µg/mL), ICC (10 - 20 µg/mL), IHC, IHC-P (1:50)

Usage: The applications listed have been tested for the unconjugated form of this product.
Other forms have not been tested.

Comment: Target Species of Antibody: Human

Restrictions: For Research Use only

Handling

Format: Liquid

Concentration: Lot specific

Buffer: PBS, pH 7.4, 1 % BSA, 0.05 % sodium azide

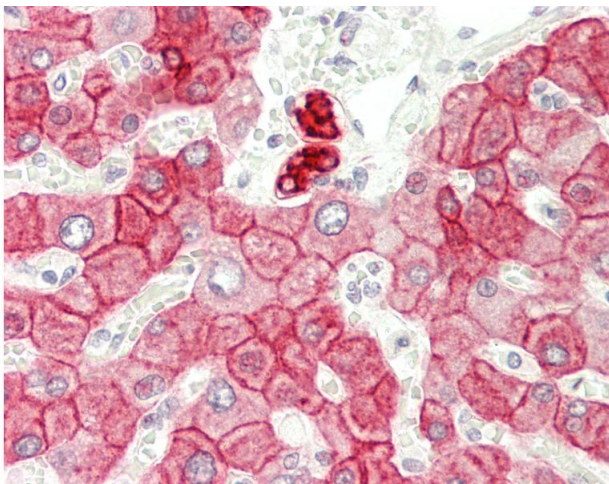
Preservative: Sodium azide

Precaution of Use: This product contains Sodium azide: a POISONOUS AND HAZARDOUS SUBSTANCE which should be handled by trained staff only.

Storage: 4 °C

Storage Comment: Store at 4°C.

Images



Immunohistochemistry

Image 1. Human Liver: Formalin-Fixed, Paraffin-Embedded (FFPE) This image was taken for the unconjugated form of this product. Other forms have not been tested.