



[Go to Product page](#)

Datasheet for ABIN2599130
anti-DTWD1 antibody

1 Image

Overview

Quantity:	50 µg
Target:	DTWD1
Reactivity:	Human
Host:	Rabbit
Clonality:	Polyclonal
Conjugate:	This DTWD1 antibody is un-conjugated
Application:	ELISA, Western Blotting (WB), Immunohistochemistry (IHC), Immunohistochemistry (Paraffin-embedded Sections) (IHC (p))

Product Details

Brand:	IHC-plus™
Immunogen:	Recombinant human DTW domain-containing protein 1 protein. Type of Immunogen: Recombinant protein
Isotype:	IgG
Specificity:	Human DTWD1
Purification:	Caprylic acid and ammonium sulfate precipitation

Target Details

Target:	DTWD1
Alternative Name:	DTWD1 (DTWD1 Products)

Target Details

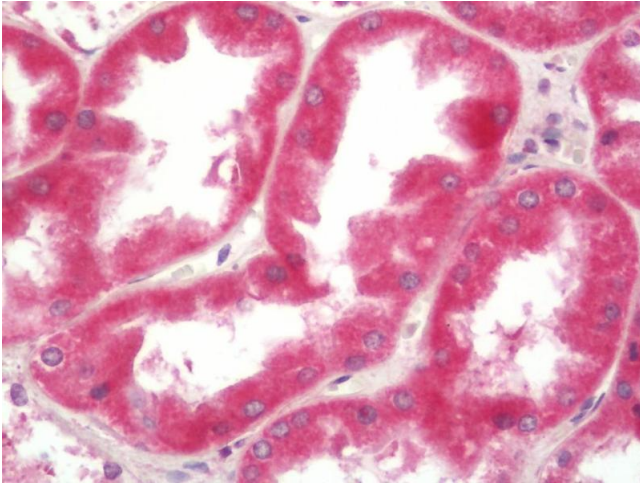
Background:	Name/Gene ID: DTWD1
	Synonyms: DTWD1, DTW domain containing 1, MDS009, X 009 protein
Gene ID:	56986

Application Details

Application Notes:	Approved: ELISA, IHC, IHC-P (10 µg/mL), WB
Comment:	Target Species of Antibody: Human
Restrictions:	For Research Use only

Handling

Format:	Liquid
Concentration:	Lot specific
Buffer:	PBS, pH 7.4, 0.03 % Proclin 300, 50 % glycerol.
Preservative:	ProClin
Precaution of Use:	This product contains ProClin: a POISONOUS AND HAZARDOUS SUBSTANCE which should be handled by trained staff only.
Handling Advice:	Avoid repeat freeze-thaw cycles.
Storage:	4 °C, -20 °C
Storage Comment:	Short term: 4°C. Long term: Store at -20°C. Avoid freeze-thaw cycles.



Immunohistochemistry (Paraffin-embedded Sections)

Image 1. Human Kidney: Formalin-Fixed, Paraffin-Embedded (FFPE). This image was taken for the unconjugated form of this product. Other forms have not been tested.