



[Go to Product page](#)

Datasheet for ABIN2599521
anti-EDNRB antibody (AA 409-439)

1 Image

Overview

| | |
|----------------------|---|
| Quantity: | 200 µL |
| Target: | EDNRB |
| Binding Specificity: | AA 409-439 |
| Reactivity: | Human, Mouse |
| Host: | Rabbit |
| Clonality: | Polyclonal |
| Conjugate: | This EDNRB antibody is un-conjugated |
| Application: | Western Blotting (WB), Immunohistochemistry (IHC), Flow Cytometry (FACS), Immunohistochemistry (Paraffin-embedded Sections) (IHC (p)), Immunofluorescence (IF) |

Product Details

| | |
|---------------|--|
| Brand: | IHC-plus™ |
| Specificity: | This EDNRB antibody is generated from rabbits immunized with a KLH conjugated synthetic peptide between 409-439 amino acids from the C-terminal region of human EDNRB. |
| Purification: | Ammonium sulfate precipitation |

Target Details

| | |
|-------------------|--|
| Target: | EDNRB |
| Alternative Name: | EDNRB / Endothelin B Receptor (EDNRB Products) |
| Background: | Name/Gene ID: EDNRB Subfamily: Endothelin |

Target Details

Family: GPCR

Synonyms: EDNRB, ABCDS, Endothelin B receptor, Etb receptor, ET-B, Et-b receptor, Et-b-r, ET-RB, ETBR, ETRB, Etb-svr, WS4A, Endothelin receptor type B, ET-BR, ETB, HSCR, HSCR2

Gene ID: 1910

Pathways: [Cellular Response to Molecule of Bacterial Origin](#), [cAMP Metabolic Process](#)

Application Details

Application Notes: Approved: Flo (1:10 - 1:50), IF (1:10 - 1:50), IHC, IHC-P (1:100), WB (1:1000)

Comment: Target Species of Antibody: Human

Restrictions: For Research Use only

Handling

Format: Liquid

Concentration: Lot specific

Buffer: PBS, 0.09 % sodium azide

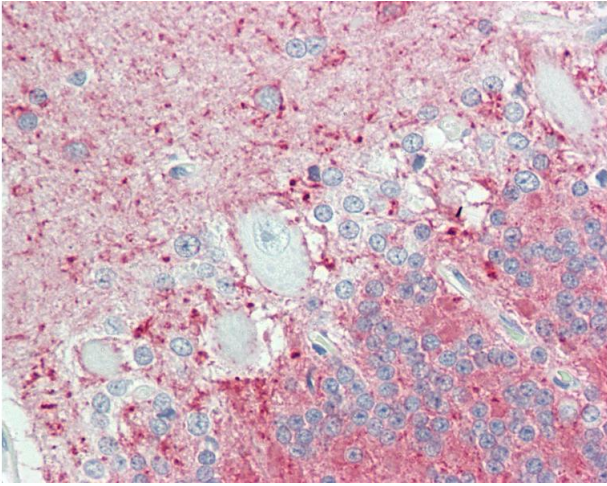
Preservative: Sodium azide

Precaution of Use: This product contains Sodium azide: a POISONOUS AND HAZARDOUS SUBSTANCE which should be handled by trained staff only.

Storage: 4 °C, -20 °C

Storage Comment: Maintain refrigerated at 2-8°C for up to 6 months. For long term storage store at -20°C.

Expiry Date: 6 months



Immunohistochemistry

Image 1. Anti-EDNRB / Endothelin B Receptor antibody IHC staining of human brain, cerebellum. Immunohistochemistry of formalin-fixed, paraffin-embedded tissue after heat-induced antigen retrieval. Antibody dilution 1:100.