



[Go to Product page](#)

Datasheet for ABIN2600505

anti-Epiregulin antibody (AA 30-169) (Biotin)

1 Image

Overview

Quantity:	100 µL
Target:	Epiregulin (EREG)
Binding Specificity:	AA 30-169
Reactivity:	Human
Host:	Rabbit
Clonality:	Polyclonal
Conjugate:	This Epiregulin antibody is conjugated to Biotin
Application:	Western Blotting (WB)

Product Details

Immunogen:	Recombinant EREG (Val30-Val169) expressed in E. coli.
	Type of Immunogen: Recombinant protein
Isotype:	IgG
Specificity:	Human EREG / Epiregulin
Purification:	Affinity purified

Target Details

Target:	Epiregulin (EREG)
Alternative Name:	EREG / Epiregulin (EREG Products)

Target Details

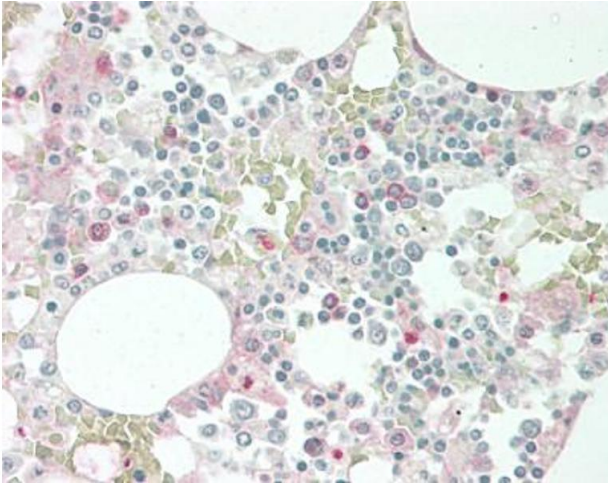
Background:	Name/Gene ID: EREG Synonyms: EREG, Epiregulin, Proepiregulin, ER
Gene ID:	2069
Pathways:	RTK Signaling , Fc-epsilon Receptor Signaling Pathway , EGFR Signaling Pathway , Neurotrophin Signaling Pathway , Regulation of Muscle Cell Differentiation

Application Details

Application Notes:	Approved: WB Usage: The applications listed have been tested for the unconjugated form of this product. Other forms have not been tested.
Comment:	Target Species of Antibody: Human
Restrictions:	For Research Use only

Handling

Format:	Liquid
Concentration:	Lot specific
Buffer:	PBS, pH 7.4, 0.02 % sodium azide, 50 % glycerol.
Preservative:	Sodium azide
Precaution of Use:	This product contains Sodium azide: a POISONOUS AND HAZARDOUS SUBSTANCE which should be handled by trained staff only.
Storage:	4 °C,-20 °C,-80 °C
Storage Comment:	Store frozen product at or below -20°C. Thawed product may be stored for 2-4 weeks at 4°C. For optimal storage, aliquot to smaller portions and store at -20°C to -70°C. Avoid freeze-thaw cycles.



Immunohistochemistry (Paraffin-embedded Sections)

Image 1. Human Bone Marrow: Formalin-Fixed, Paraffin-Embedded (FFPE). This image was taken for the unconjugated form of this product. Other forms have not been tested.