



[Go to Product page](#)

Datasheet for ABIN2600576

## anti-ERP29 antibody

### 1 Image

#### Overview

Quantity:	50 µg
Target:	ERP29
Reactivity:	Human, Rat, Mouse, Dog, Cow, Guinea Pig, Hamster
Host:	Rabbit
Clonality:	Polyclonal
Conjugate:	This ERP29 antibody is un-conjugated
Application:	Western Blotting (WB), ELISA, Immunohistochemistry (IHC), Immunohistochemistry (Paraffin-embedded Sections) (IHC (p))

#### Product Details

Brand:	IHC-plus™
Immunogen:	Recombinant human Endoplasmic reticulum resident protein 29 protein. Type of Immunogen: Recombinant protein
Isotype:	IgG
Specificity:	Human ERP29
Purification:	Caprylic acid and ammonium sulfate precipitation

#### Target Details

Target:	ERP29
Alternative Name:	ERP29 ( <a href="#">ERP29 Products</a> )

## Target Details

---

Background:	Name/Gene ID: ERP29
	Synonyms: ERP29, C12orf8, ERp28, ERp31, PDI-DB, PDIA9
Gene ID:	10961

## Application Details

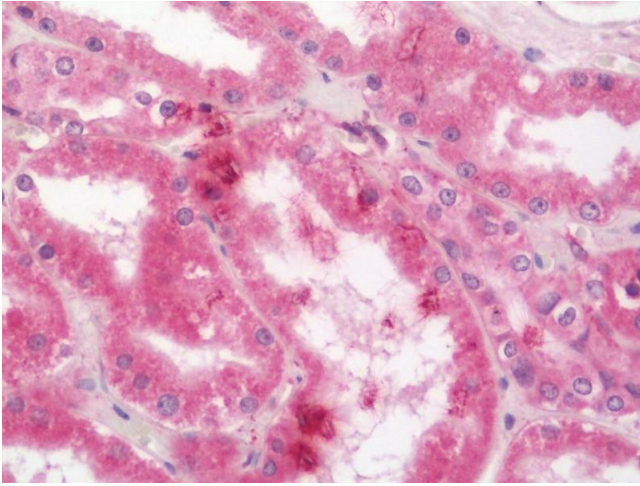
---

Application Notes:	Approved: ELISA, IHC, IHC-P (10 µg/mL), WB
Comment:	Target Species of Antibody: Human
Restrictions:	For Research Use only

## Handling

---

Format:	Liquid
Concentration:	Lot specific
Buffer:	PBS, pH 7.4, 0.03 % Proclin 300, 50 % glycerol.
Preservative:	ProClin
Precaution of Use:	This product contains ProClin: a POISONOUS AND HAZARDOUS SUBSTANCE which should be handled by trained staff only.
Handling Advice:	Avoid freeze-thaw cycles.
Storage:	-20 °C,-80 °C
Storage Comment:	Aliquot and store at -20°C or -80°C. Avoid freeze-thaw cycles.



#### Immunohistochemistry (Paraffin-embedded Sections)

**Image 1.** Human Kidney: Formalin-Fixed, Paraffin-Embedded (FFPE). This image was taken for the unconjugated form of this product. Other forms have not been tested.