



[Go to Product page](#)

Datasheet for ABIN2601294
anti-FAM26F antibody (AA 266-295)

1 Image

Overview

Quantity:	200 µL
Target:	FAM26F
Binding Specificity:	AA 266-295
Reactivity:	Human
Host:	Rabbit
Clonality:	Polyclonal
Conjugate:	This FAM26F antibody is un-conjugated
Application:	Western Blotting (WB), Immunohistochemistry (Paraffin-embedded Sections) (IHC (p)), Immunohistochemistry (IHC)

Product Details

Brand:	IHC-plus™
Specificity:	This FAM26F antibody is generated from rabbits immunized with a KLH conjugated synthetic peptide between 266-295 amino acids from the C-terminal region of human FAM26F.
Purification:	Protein A purified

Target Details

Target:	FAM26F
Alternative Name:	FAM26F (FAM26F Products)
Background:	Name/Gene ID: FAM26F

Target Details

Synonyms: FAM26F, C6orf187, RP1-93H18.5, OTTHUMP00000017061, DJ93H18.5, OTTHUMP00000017062, Protein FAM26F

Gene ID: 441168

Application Details

Application Notes: Approved: IHC, IHC-P (1:100), WB (1:1000)

Comment: Target Species of Antibody: Human

Restrictions: For Research Use only

Handling

Format: Liquid

Concentration: Lot specific

Buffer: PBS, 0.09 % sodium azide.

Preservative: Sodium azide

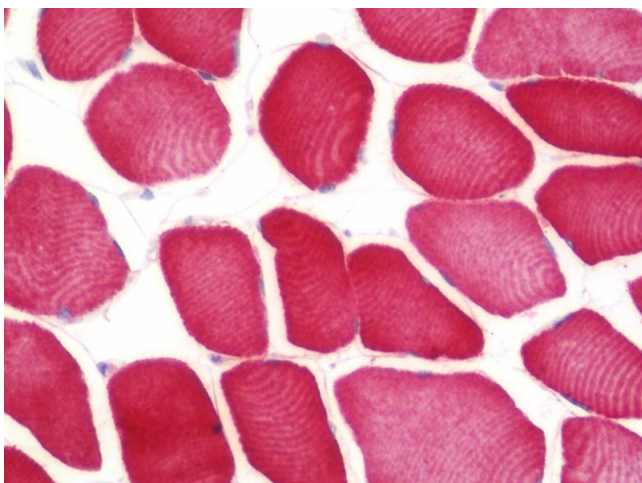
Precaution of Use: This product contains Sodium azide: a POISONOUS AND HAZARDOUS SUBSTANCE which should be handled by trained staff only.

Handling Advice: avoid freeze thaw cycles

Storage: 4 °C, -20 °C

Storage Comment: Short term 4°C, long term aliquot and store at -20°C, avoid freeze-thaw cycles.

Images



Immunohistochemistry

Image 1. Anti-FAM26F antibody IHC staining of human skeletal muscle. Immunohistochemistry of formalin-fixed, paraffin-embedded tissue after heat-induced antigen retrieval. Antibody dilution 1:100.