

Datasheet for ABIN2603439
anti-GCLC antibody (AA 286-315)



[Go to Product page](#)

1 Image

Overview

Quantity:	200 µL
Target:	GCLC
Binding Specificity:	AA 286-315
Reactivity:	Human, Mouse
Host:	Rabbit
Clonality:	Polyclonal
Conjugate:	This GCLC antibody is un-conjugated
Application:	Western Blotting (WB), Immunohistochemistry (IHC), Immunohistochemistry (Paraffin-embedded Sections) (IHC (p))

Product Details

Brand:	IHC-plus™
Specificity:	This GCLC antibody is generated from rabbits immunized with a KLH conjugated synthetic peptide between 286-315 amino acids from the Central region of human GCLC.
Purification:	Protein A purified

Target Details

Target:	GCLC
Alternative Name:	GCLC (GCLC Products)
Background:	Name/Gene ID: GCLC

Target Details

Synonyms: GCLC, GCL, GCS heavy chain, Gamma-ECS, GCS, GLCL, GLCLC

Gene ID: 2729

Pathways: [Cell RedoxHomeostasis](#)

Application Details

Application Notes: Approved: IHC, IHC-P (1:100), WB (1:1000)

Comment: Target Species of Antibody: Human

Restrictions: For Research Use only

Handling

Format: Liquid

Concentration: Lot specific

Buffer: PBS, 0.09 % sodium azide

Preservative: Sodium azide

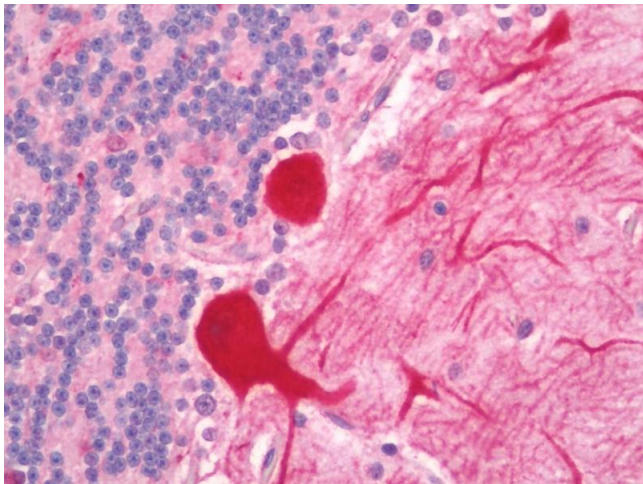
Precaution of Use: This product contains Sodium azide: a POISONOUS AND HAZARDOUS SUBSTANCE which should be handled by trained staff only.

Storage: 4 °C,-20 °C

Storage Comment: Maintain refrigerated at 2-8°C for up to 6 months. For long term storage store at -20°C.

Expiry Date: 6 months

Images



Immunohistochemistry

Image 1. Human Brain, Cerebellum: Formalin-Fixed, Paraffin-Embedded (FFPE)