

Datasheet for ABIN2604371
anti-GPM6A antibody (AA 232-259)[Go to Product page](#)

1 Image

Overview

Quantity:	200 µL
Target:	GPM6A
Binding Specificity:	AA 232-259
Reactivity:	Human
Host:	Rabbit
Clonality:	Polyclonal
Application:	Western Blotting (WB), Immunohistochemistry (IHC), Flow Cytometry (FACS), Immunohistochemistry (Paraffin-embedded Sections) (IHC (p))

Product Details

Brand:	IHC-plus™
Specificity:	This GPM6A antibody is generated from rabbits immunized with a KLH conjugated synthetic peptide between 232-259 amino acids from the C-terminal region of human GPM6A.
Purification:	Protein A purified

Target Details

Target:	GPM6A
Alternative Name:	GPM6A / Glycoprotein M6A (GPM6A Products)
Background:	Name/Gene ID: GPM6A Synonyms: GPM6A, GPM6, Glycoprotein M6A, M6A, Membrane glycoprotein m6-a

Target Details

Gene ID: 2823

Application Details

Application Notes: Approved: Flo (1:10 - 1:50), IHC, IHC-P (1:100), WB (1:1000)

Comment: Target Species of Antibody: Human

Restrictions: For Research Use only

Handling

Format: Liquid

Concentration: Lot specific

Buffer: PBS, 0.09 % sodium azide

Preservative: Sodium azide

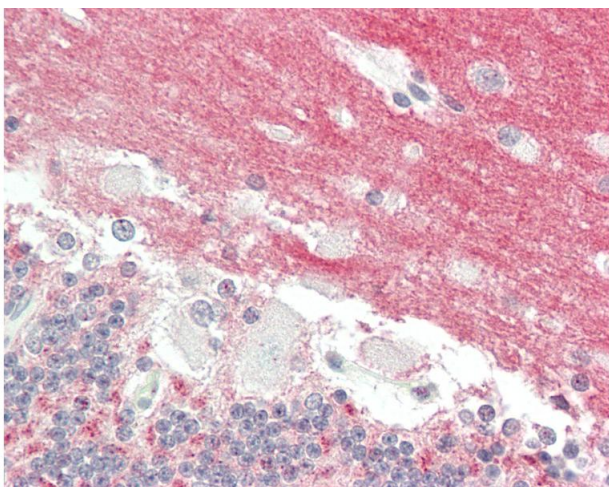
Precaution of Use: This product contains Sodium azide: a POISONOUS AND HAZARDOUS SUBSTANCE which should be handled by trained staff only.

Storage: 4 °C,-20 °C

Storage Comment: Maintain refrigerated at 2-8°C for up to 6 months. For long term storage store at -20°C.

Expiry Date: 6 months

Images



Immunohistochemistry

Image 1. Human Brain, Cerebellum: Formalin-Fixed, Paraffin-Embedded (FFPE)