



[Go to Product page](#)

Datasheet for ABIN2604766

anti-GSE1/KIAA0182 antibody (AA 463-636)

1 Image

Overview

Quantity:	50 µg
Target:	GSE1/KIAA0182 (GSE1)
Binding Specificity:	AA 463-636
Reactivity:	Human
Host:	Rabbit
Clonality:	Polyclonal
Conjugate:	This GSE1/KIAA0182 antibody is un-conjugated
Application:	Western Blotting (WB), ELISA, Immunohistochemistry (IHC), Immunohistochemistry (Paraffin-embedded Sections) (IHC (p))

Product Details

Brand:	IHC-plus™
Immunogen:	A recombinant human GSE1 protein 463-636aa (BC037556). Type of Immunogen: Recombinant protein
Specificity:	Human KIAA0182.
Purification:	Affinity purified

Target Details

Target:	GSE1/KIAA0182 (GSE1)
Alternative Name:	GSE1 / KIAA0182 (GSE1 Products)

Target Details

Background: Name/Gene ID: GSE1
Synonyms: GSE1, Gse1 coiled-coil protein, KIAA0182

Gene ID: 23199

Application Details

Application Notes: Approved: ELISA (1:20000 - 1:80000), IHC, IHC-P (5 µg/mL), WB (1:1000 - 1:2000)

Comment: Target Species of Antibody: Human

Restrictions: For Research Use only

Handling

Format: Liquid

Concentration: Lot specific

Buffer: PBS, pH 7.4, 0.02 % sodium azide

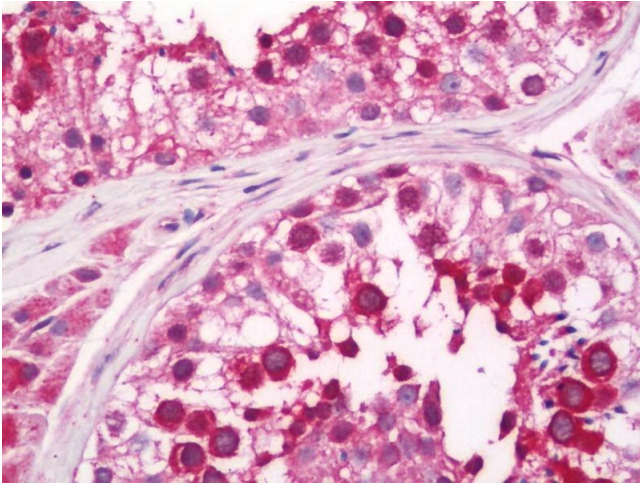
Preservative: Sodium azide

Precaution of Use: This product contains Sodium azide: a POISONOUS AND HAZARDOUS SUBSTANCE which should be handled by trained staff only.

Storage: -20 °C

Storage Comment: Store at -20°C for up to 1 year.

Expiry Date: 12 months



Immunohistochemistry

Image 1. Human Testis: Formalin-Fixed, Paraffin-Embedded (FFPE)