

Datasheet for ABIN2605621
anti-HDGF antibody (FITC)[Go to Product page](#)

1 Image

Overview

| | |
|--------------|---|
| Quantity: | 100 µg |
| Target: | HDGF |
| Reactivity: | Human |
| Host: | Rabbit |
| Clonality: | Polyclonal |
| Conjugate: | This HDGF antibody is conjugated to FITC |
| Application: | Western Blotting (WB), Immunohistochemistry (IHC), ELISA, Immunohistochemistry (Paraffin-embedded Sections) (IHC (p)) |

Product Details

| | |
|---------------|---|
| Immunogen: | Recombinant human Hepatoma-derived growth factor protein. Type of Immunogen: Recombinant protein |
| Isotype: | IgG |
| Specificity: | Human HDGF |
| Purification: | Caprylic acid and ammonium sulfate precipitation |

Target Details

| | |
|-------------------|--|
| Target: | HDGF |
| Alternative Name: | HDGF (HDGF Products) |
| Background: | Name/Gene ID: HDGF |

Target Details

Synonyms: HDGF, Hepatoma-derived growth factor, HMG-1L2, HMG1L2

Gene ID: 3068

Pathways: [ER-Nucleus Signaling](#)

Application Details

Application Notes: Approved: ELISA, IHC, IHC-P, WB

Usage: The applications listed have been tested for the unconjugated form of this product.
Other forms have not been tested.

Comment: Target Species of Antibody: Human

Restrictions: For Research Use only

Handling

Format: Liquid

Concentration: Lot specific

Buffer: PBS, pH 7.4, 0.03 % Proclin 300, 50 % glycerol.

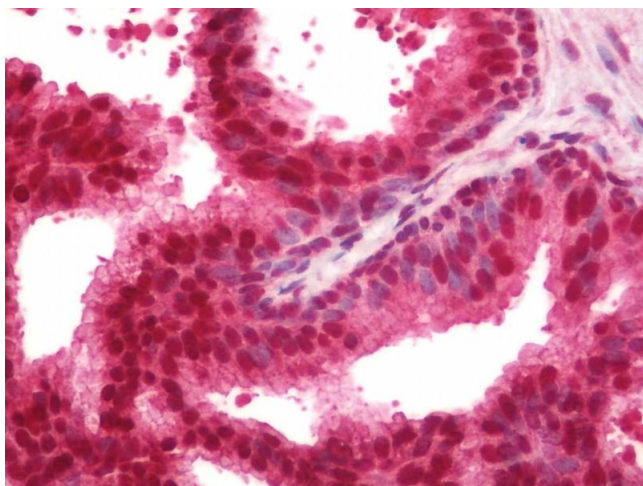
Preservative: ProClin

Precaution of Use: This product contains ProClin: a POISONOUS AND HAZARDOUS SUBSTANCE which should be handled by trained staff only.

Handling Advice: Avoid freeze-thaw cycles.

Storage: -20 °C, -80 °C

Storage Comment: Aliquot and store at -20°C or -80°C. Avoid freeze-thaw cycles.



Immunohistochemistry (Paraffin-embedded Sections)

Image 1. Human Prostate: Formalin-Fixed, Paraffin-Embedded (FFPE). This image was taken for the unconjugated form of this product. Other forms have not been tested.