



[Go to Product page](#)

Datasheet for ABIN2606040
anti-HIST2H2AB antibody (AA 1-30)

1 Image

Overview

Quantity:	200 µL
Target:	HIST2H2AB (Hist2h2ab)
Binding Specificity:	AA 1-30
Reactivity:	Human
Host:	Rabbit
Clonality:	Polyclonal
Conjugate:	This HIST2H2AB antibody is un-conjugated
Application:	Western Blotting (WB), Immunohistochemistry (Paraffin-embedded Sections) (IHC (p)), Immunohistochemistry (IHC)

Product Details

Brand:	IHC-plus™
Specificity:	This HIST2H2AB antibody is generated from rabbits immunized with a KLH conjugated synthetic peptide between 1-30 amino acids from the N-terminal region of human HIST2H2AB.
Purification:	Protein A purified

Target Details

Target:	HIST2H2AB (Hist2h2ab)
Alternative Name:	HIST2H2AB (Hist2h2ab Products)
Background:	Name/Gene ID: HIST2H2AB

Target Details

Synonyms: HIST2H2AB, Histone cluster 2, H2ab, H2AB, Histone H2A type 2-B, Histone 2, H2ab

Gene ID: 317772

Application Details

Application Notes: Approved: IHC, IHC-P (1:50), WB (1:1000)

Comment: Target Species of Antibody: Human

Restrictions: For Research Use only

Handling

Format: Liquid

Concentration: Lot specific

Buffer: PBS, 0.09 % sodium azide

Preservative: Sodium azide

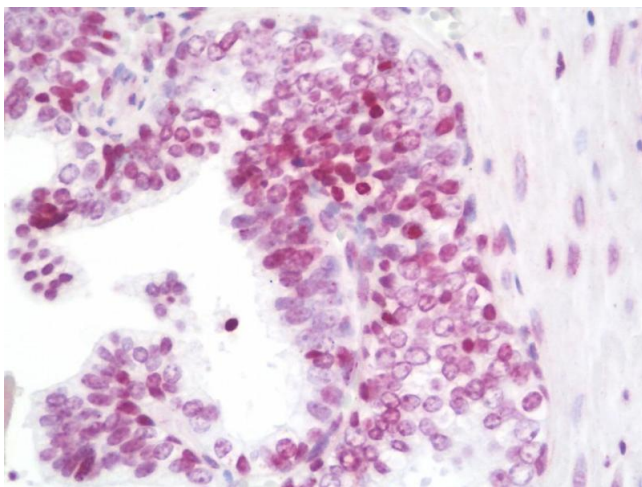
Precaution of Use: This product contains Sodium azide: a POISONOUS AND HAZARDOUS SUBSTANCE which should be handled by trained staff only.

Storage: 4 °C, -20 °C

Storage Comment: Maintain refrigerated at 2-8°C for up to 6 months. For long term storage store at -20°C.

Expiry Date: 6 months

Images



Immunohistochemistry

Image 1. Anti-HIST2H2AB antibody IHC staining of human prostate. Immunohistochemistry of formalin-fixed, paraffin-embedded tissue after heat-induced antigen retrieval. Antibody dilution 1:50.