



[Go to Product page](#)

Datasheet for ABIN2606319  
**anti-HLA-DRB1 antibody (HRP)**

1 Image

### Overview

Quantity:	100 µg
Target:	HLA-DRB1
Reactivity:	Human
Host:	Rabbit
Clonality:	Polyclonal
Conjugate:	This HLA-DRB1 antibody is conjugated to HRP
Application:	Western Blotting (WB), ELISA, Immunohistochemistry (IHC), Immunohistochemistry (Paraffin-embedded Sections) (IHC (p))

### Product Details

Immunogen:	Recombinant human HLA class II histocompatibility antigen, DRB1-3 chain protein. Type of Immunogen: Recombinant protein
Isotype:	IgG
Purification:	Caprylic acid and ammonium sulfate precipitation

### Target Details

Target:	HLA-DRB1
Alternative Name:	HLA-DRB1 ( <a href="#">HLA-DRB1 Products</a> )
Pathways:	<a href="#">TCR Signaling</a> , <a href="#">Positive Regulation of Peptide Hormone Secretion</a> , <a href="#">Production of Molecular Mediator of Immune Response</a> , <a href="#">CXCR4-mediated Signaling Events</a> , <a href="#">Cancer Immune</a>

## Target Details

---

Checkpoints, Human Leukocyte Antigen (HLA) in Adaptive Immune Response

## Application Details

---

Application Notes: Approved: ELISA, IHC, IHC-P, WB

Usage: The applications listed have been tested for the unconjugated form of this product.  
Other forms have not been tested.

Comment: Target Species of Antibody: Human

Restrictions: For Research Use only

## Handling

---

Format: Liquid

Concentration: Lot specific

Buffer: PBS, pH 7.4, 0.03 % Proclin 300, 50 % glycerol.

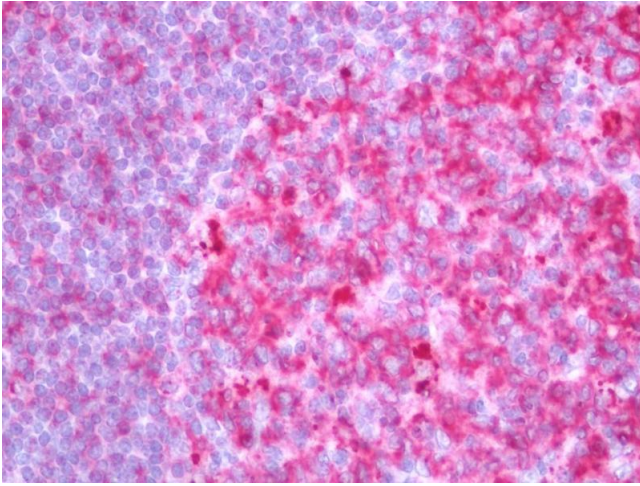
Preservative: ProClin

Precaution of Use: This product contains ProClin: a POISONOUS AND HAZARDOUS SUBSTANCE which should be handled by trained staff only.

Handling Advice: Avoid freeze-thaw cycles.

Storage: -20 °C, -80 °C

Storage Comment: Aliquot and store at -20°C or -80°C. Avoid freeze-thaw cycles.



#### Immunohistochemistry (Paraffin-embedded Sections)

**Image 1.** Human Tonsil: Formalin-Fixed, Paraffin-Embedded (FFPE). This image was taken for the unconjugated form of this product. Other forms have not been tested.