



[Go to Product page](#)

Datasheet for ABIN2610044
anti-IMPDH1 antibody (AA 487-514)

1 Image

Overview

Quantity:	200 µL
Target:	IMPDH1
Binding Specificity:	AA 487-514
Reactivity:	Human
Host:	Rabbit
Clonality:	Polyclonal
Conjugate:	This IMPDH1 antibody is un-conjugated
Application:	Western Blotting (WB), Immunohistochemistry (IHC), Immunofluorescence (IF), Immunohistochemistry (Paraffin-embedded Sections) (IHC (p))

Product Details

Brand:	IHC-plus™
Specificity:	This IMPDH1 antibody is generated from rabbits immunized with a KLH conjugated synthetic peptide between 487-514 amino acids from the C-terminal region of human IMPDH1.
Purification:	Protein A purified

Target Details

Target:	IMPDH1
Alternative Name:	IMPDH1 (IMPDH1 Products)
Background:	Name/Gene ID: IMPDH1

Target Details

Synonyms: IMPDH1, IMP dehydrogenase 1, IMPD 1, IMPDH 1, IMPD1, LCA11, IMPD, IMPDH-I, SWSS2608, RP10

Gene ID: 3614

Pathways: [Ribonucleoside Biosynthetic Process](#)

Application Details

Application Notes: Approved: IF (1:10 - 1:50), IHC, IHC-P (1:50), WB (1:1000)

Comment: Target Species of Antibody: Human

Restrictions: For Research Use only

Handling

Format: Liquid

Concentration: Lot specific

Buffer: PBS, 0.09 % sodium azide

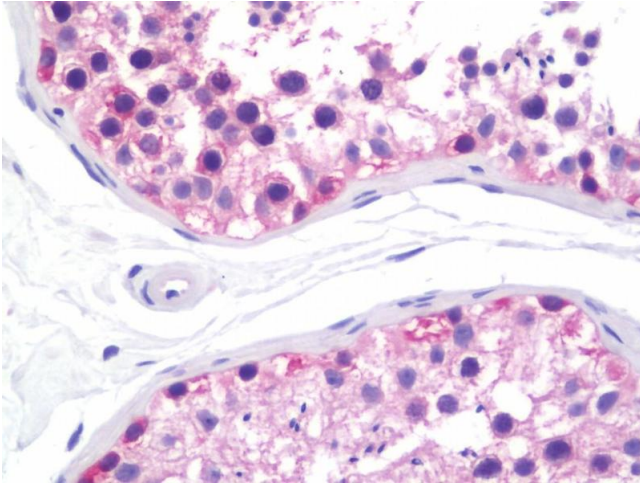
Preservative: Sodium azide

Precaution of Use: This product contains Sodium azide: a POISONOUS AND HAZARDOUS SUBSTANCE which should be handled by trained staff only.

Storage: 4 °C,-20 °C

Storage Comment: Maintain refrigerated at 2-8°C for up to 6 months. For long term storage store at -20°C.

Expiry Date: 6 months



Immunohistochemistry

Image 1. Anti-IMPDH1 antibody IHC staining of human testis. Immunohistochemistry of formalin-fixed, paraffin-embedded tissue after heat-induced antigen retrieval. Antibody dilution 1:50.