

Datasheet for ABIN2611041

anti-Aspartate beta Hydroxylase antibody (FITC)[Go to Product page](#)**1** Image

Overview

Quantity:	100 µg
Target:	Aspartate beta Hydroxylase (ASPH)
Reactivity:	Human
Host:	Rabbit
Clonality:	Polyclonal
Conjugate:	This Aspartate beta Hydroxylase antibody is conjugated to FITC
Application:	Western Blotting (WB), Immunohistochemistry (IHC), ELISA, Immunohistochemistry (Paraffin-embedded Sections) (IHC (p))

Product Details

Immunogen:	Recombinant human Aspartyl/asparaginyl beta-hydroxylase protein. Type of Immunogen: Recombinant protein
Isotype:	IgG
Specificity:	Human Junctin / ASPH
Purification:	Caprylic acid and ammonium sulfate precipitation

Target Details

Target:	Aspartate beta Hydroxylase (ASPH)
Alternative Name:	Junctin / ASPH (ASPH Products)
Background:	Name/Gene ID: ASPH

Target Details

Synonyms: ASPH, A beta H-J-J, AAH, ASP beta-hydroxylase, BAH, Aspartate beta-hydroxylase, CASQ2BP1, Cardiac junctin, HAAH, Humbug, JCTN, Junctate, Junctin

Gene ID: 444

Pathways: [Positive Regulation of Endopeptidase Activity](#)

Application Details

Application Notes: Approved: ELISA, IHC, IHC-P, WB

Usage: The applications listed have been tested for the unconjugated form of this product. Other forms have not been tested.

Comment: Target Species of Antibody: Human

Restrictions: For Research Use only

Handling

Format: Liquid

Concentration: Lot specific

Buffer: PBS, pH 7.4, 0.03 % Proclin 300, 50 % glycerol.

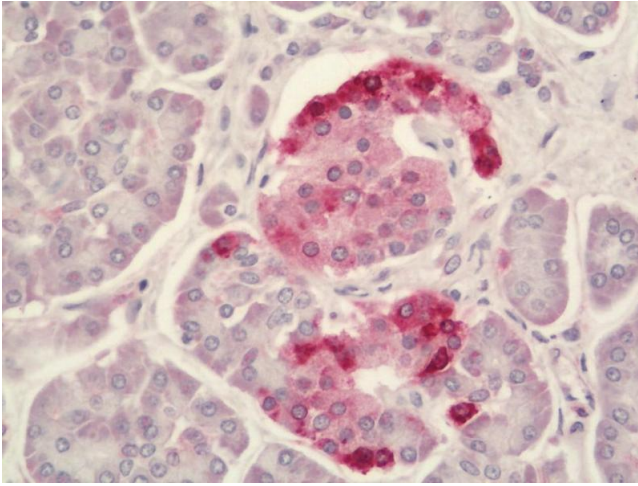
Preservative: ProClin

Precaution of Use: This product contains ProClin: a POISONOUS AND HAZARDOUS SUBSTANCE which should be handled by trained staff only.

Handling Advice: Avoid freeze-thaw cycles.

Storage: -20 °C,-80 °C

Storage Comment: Aliquot and store at -20°C or -80°C. Avoid freeze-thaw cycles.



Immunohistochemistry

Image 1. Human Pancreas: Formalin-Fixed, Paraffin-Embedded (FFPE). This image was taken for the unconjugated form of this product. Other forms have not been tested.