



Datasheet for ABIN2612271

anti-Laminin gamma 1 antibody (FITC)



[Go to Product page](#)

1 Image

Overview

| | |
|--------------|---|
| Quantity: | 100 µg |
| Target: | Laminin gamma 1 (LAMC1) |
| Reactivity: | Human |
| Host: | Rabbit |
| Clonality: | Polyclonal |
| Conjugate: | This Laminin gamma 1 antibody is conjugated to FITC |
| Application: | Western Blotting (WB), ELISA, Immunohistochemistry (IHC), Immunohistochemistry (Paraffin-embedded Sections) (IHC (p)) |

Product Details

| | |
|---------------|--|
| Immunogen: | Recombinant human Laminin subunit gamma-1 protein. Type of Immunogen: Recombinant protein |
| Isotype: | IgG |
| Specificity: | Human LAMC1 / Laminin Gamma 1 |
| Purification: | Caprylic acid and ammonium sulfate precipitation |

Target Details

| | |
|-------------------|--|
| Target: | Laminin gamma 1 (LAMC1) |
| Alternative Name: | LAMC1 / Laminin gamma 1 (LAMC1 Products) |
| Background: | Name/Gene ID: LAMC1 |

Target Details

Family: Laminin

Synonyms: LAMC1, Laminin subunit gamma-1, Laminin-7 subunit gamma, Laminin-8 subunit gamma, Laminin-1 subunit gamma, Laminin-4 subunit gamma, Laminin-9 subunit gamma, Laminin B2 chain, Laminin gamma-1 chain, Laminin-3 subunit gamma, Laminin-6 subunit gamma, S-laminin subunit gamma, Laminin Gamma 1, Laminin-10 subunit gamma, Laminin-11 subunit gamma, Laminin-2 subunit gamma, S-LAM gamma

Gene ID: 3915

Application Details

Application Notes: Approved: ELISA, IHC, IHC-P, WB

Usage: The applications listed have been tested for the unconjugated form of this product. Other forms have not been tested.

Comment: Target Species of Antibody: Human

Restrictions: For Research Use only

Handling

Format: Liquid

Concentration: Lot specific

Buffer: PBS, pH 7.4, 0.03 % Proclin 300, 50 % glycerol.

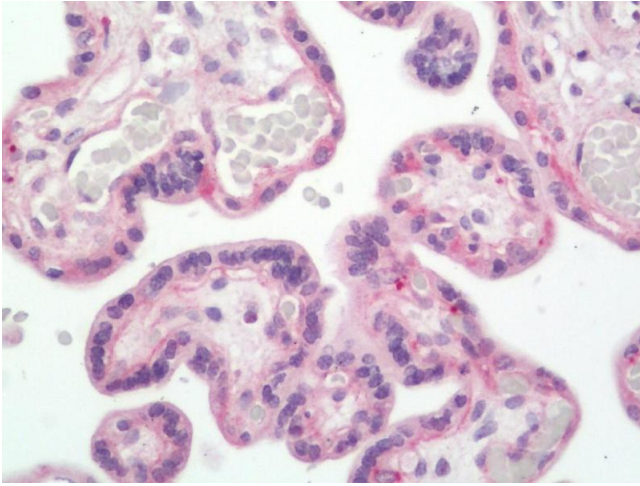
Preservative: ProClin

Precaution of Use: This product contains ProClin: a POISONOUS AND HAZARDOUS SUBSTANCE which should be handled by trained staff only.

Handling Advice: Avoid freeze-thaw cycles.

Storage: -20 °C, -80 °C

Storage Comment: Aliquot and store at -20°C or -80°C. Avoid freeze-thaw cycles.



Immunohistochemistry (Paraffin-embedded Sections)

Image 1. Human Placenta: Formalin-Fixed, Paraffin-Embedded (FFPE). This image was taken for the unconjugated form of this product. Other forms have not been tested.