



[Go to Product page](#)

Datasheet for ABIN2612856

## anti-Luteinizing Hormone antibody

### 1 Image

#### Overview

|              |   |
|--------------|---|
| Quantity:    | 0.25 mL   |
| Target:      | Luteinizing Hormone (LH)  |
| Reactivity:  | Human, Rat, Monkey  |
| Host:        | Rabbit  |
| Clonality:   | Polyclonal  |
| Conjugate:   | This Luteinizing Hormone antibody is un-conjugated                                      |
| Application: | Immunohistochemistry (IHC), Immunohistochemistry (Paraffin-embedded Sections) (IHC (p)) |

#### Product Details

|               |   |
|---------------|---|
| Brand:        | IHC-plus™   |
| Immunogen:    | Human luteinizing hormone(LH).<br>Type of Immunogen: Purified protein |
| Specificity:  | LH / Luteinizing Hormone.   |
| Purification: | Purified  |

#### Target Details

|                   |  |
|-------------------|--|
| Target:           | Luteinizing Hormone (LH)                                 |
| Alternative Name: | LH / Luteinizing Hormone ( <a href="#">LH Products</a> ) |
| Background:       | Name/Gene ID: LH   |

## Target Details

Synonyms: LH

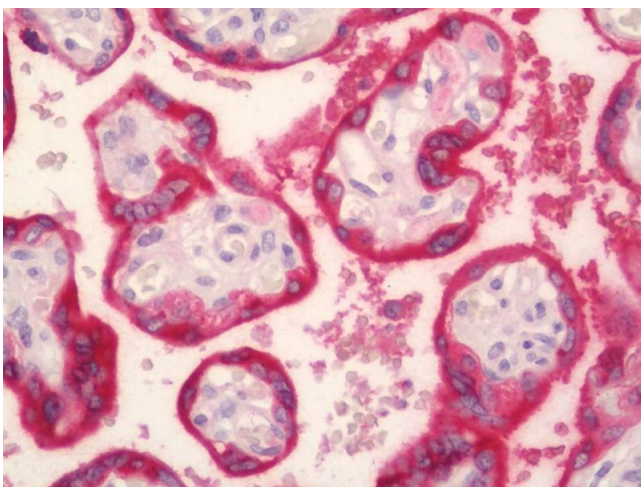
## Application Details

|                    |                                   |
|--------------------|-----------------------------------|
| Application Notes: | Approved: IHC, IHC-P (1:100)      |
| Comment:           | Target Species of Antibody: Human |
| Restrictions:      | For Research Use only             |

## Handling

|                    |  |
|--------------------|--|
| Format:            | Liquid   |
| Concentration:     | Lot specific   |
| Buffer:            | 0.02 M sodium phosphate, 0.1 M sodium chloride, pH 7.4, 0.05 % sodium azide  |
| Preservative:      | Sodium azide   |
| Precaution of Use: | This product contains Sodium azide: a POISONOUS AND HAZARDOUS SUBSTANCE which should be handled by trained staff only. |
| Handling Advice:   | Do not freeze.   |
| Storage:           | 4 °C   |
| Storage Comment:   | Store at 4°C. Do not freeze.   |

## Images



### Immunohistochemistry (Paraffin-embedded Sections)

**Image 1.** Human Placenta: Formalin-Fixed, Paraffin-Embedded (FFPE)