

Datasheet for ABIN2613347
anti-LRRC40 antibody (HRP)[Go to Product page](#)

1 Image

Overview

Quantity:	100 µg
Target:	LRRC40
Reactivity:	Human
Host:	Rabbit
Clonality:	Polyclonal
Conjugate:	This LRRC40 antibody is conjugated to HRP
Application:	Western Blotting (WB), ELISA, Immunohistochemistry (IHC), Immunohistochemistry (Paraffin-embedded Sections) (IHC (p))

Product Details

Immunogen:	Recombinant human Leucine-rich repeat-containing protein 40 protein. Type of Immunogen: Recombinant protein
Isotype:	IgG
Specificity:	Human LRRC40
Purification:	Caprylic acid and ammonium sulfate precipitation

Target Details

Target:	LRRC40
Alternative Name:	LRRC40 (LRRC40 Products)
Background:	Name/Gene ID: LRRC40

Target Details

Synonyms: LRRC40, DJ677H15.1

Gene ID: 55631

Application Details

Application Notes: Approved: ELISA, IHC, IHC-P, WB

Usage: The applications listed have been tested for the unconjugated form of this product.
Other forms have not been tested.

Comment: Target Species of Antibody: Human

Restrictions: For Research Use only

Handling

Format: Liquid

Concentration: Lot specific

Buffer: PBS, pH 7.4, 0.03 % Proclin 300, 50 % glycerol.

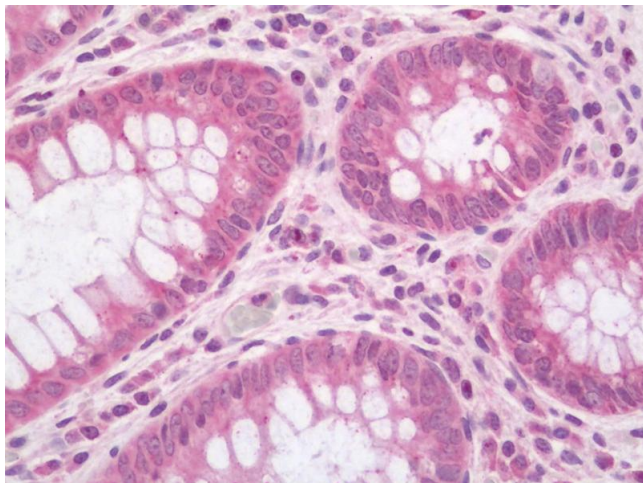
Preservative: ProClin

Precaution of Use: This product contains ProClin: a POISONOUS AND HAZARDOUS SUBSTANCE which should be handled by trained staff only.

Handling Advice: Avoid freeze-thaw cycles.

Storage: -20 °C, -80 °C

Storage Comment: Aliquot and store at -20°C or -80°C. Avoid freeze-thaw cycles.



Immunohistochemistry (Paraffin-embedded Sections)

Image 1. Human Colon: Formalin-Fixed, Paraffin-Embedded (FFPE). This image was taken for the unconjugated form of this product. Other forms have not been tested.