

Datasheet for ABIN2613380
anti-AMACR antibody (AA 312-326)[Go to Product page](#)

4 Images

Overview

Quantity:	100 µg
Target:	AMACR
Binding Specificity:	AA 312-326
Reactivity:	Human
Host:	Goat
Clonality:	Polyclonal
Conjugate:	This AMACR antibody is un-conjugated
Application:	Western Blotting (WB), Immunohistochemistry (IHC), ELISA

Product Details

Purpose:	AMACR (aa312-326)
Sequence:	RGSFITSEEQ DVSPR
Isotype:	IgG
Cross-Reactivity:	Human
Purification:	Purified from goat serum by ammonium sulphate precipitation followed by antigen affinity chromatography using the immunizing peptide.
Grade:	Verified

Target Details

Target:	AMACR
---------	-------

Target Details

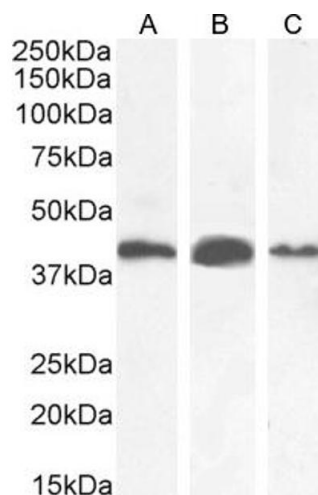
Alternative Name:	AMACR (AMACR Products)
Background:	AMACR, alpha-methylacyl-CoA racemase, AMACRD, CBAS4, RACE, RM, 2-methylacyl-CoA racemase
Gene ID:	23600
NCBI Accession:	NP_055139 , NP_001161067
Pathways:	Monocarboxylic Acid Catabolic Process

Application Details

Application Notes:	Immunohistochemistry: Paraffin embedded Human Kidney. Recommended concentration: 5 µg/mL. Western Blot: Approx 40-42 kDa band observed in Human Kidney, Liver and Colorectal cancer lysates, and in lysates of cell line CaCo-2, and approx 40.45 kDa band observed in lysates of cell line LNCaP (calculated MW of 42.4 kDa according to NP_055139.4) and Peptide ELISA: antibody detection limit dilution 1:64000.
Restrictions:	For Research Use only

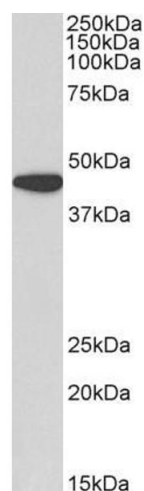
Handling

Format:	Liquid
Concentration:	0.5 mg/mL
Buffer:	Supplied at 0.5 mg/mL in Tris saline, 0.02 % sodium azide, pH 7.3 with 0.5 % bovine serum albumin.
Preservative:	Sodium azide
Precaution of Use:	This product contains Sodium azide: a POISONOUS AND HAZARDOUS SUBSTANCE which should be handled by trained staff only.
Handling Advice:	Minimize freezing and thawing.
Storage:	-20 °C
Storage Comment:	Aliquot and store at -20°C, with minimal freeze/thawing. A working aliquot may be refrigerated at 4°C for a few weeks and still remain viable.



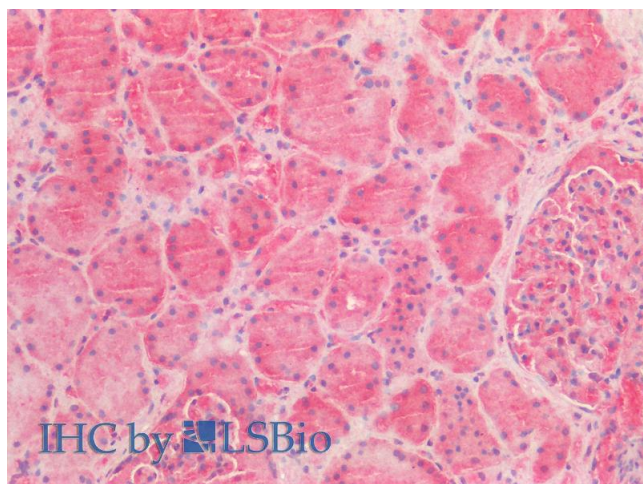
Western Blotting

Image 1. (ABIN2613379) (0.03 µg/mL) staining of Human Kidney (A), (0.1 µg/mL) Liver (B) and (1 µg/mL) Colorectal cancer (C) lysate (35 µg protein in RIPA buffer). Detected by chemiluminescence.



Western Blotting

Image 2. ABIN2613380 (0.1 µg/ml) staining of Human Kidney lysate (35 µg protein in RIPA buffer). Detected by chemiluminescence.



Immunohistochemistry

Image 3. ABIN2613380 (5 µg/ml) staining of paraffin embedded Human Kidney. Steamed antigen retrieval with citrate buffer pH 6, AP-staining.

Please check the [product details page](#) for more images. Overall 4 images are available for ABIN2613380.