

Datasheet for ABIN2613381

anti-AMHR2 antibody (Internal Region)[Go to Product page](#)**1** Image

Overview

Quantity:	100 µg
Target:	AMHR2
Binding Specificity:	Internal Region
Reactivity:	Human
Host:	Goat
Clonality:	Polyclonal
Conjugate:	This AMHR2 antibody is un-conjugated
Application:	Western Blotting (WB), ELISA

Product Details

Purpose:	AMHR2
Sequence:	HPQESHPPFPE SCPR
Isotype:	IgG
Specificity:	This antibody is expected to recognize isoform 1 (NP_065434.1) and isoform 3 (NP_001158163.1).
Cross-Reactivity:	Human
Purification:	Purified from goat serum by ammonium sulphate precipitation followed by antigen affinity chromatography using the immunizing peptide.
Grade:	Verified

Target Details

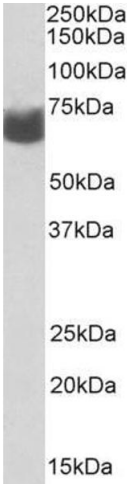
Target:	AMHR2
Alternative Name:	AMHR2 (AMHR2 Products)
Background:	AMHR2, anti-Mullerian hormone receptor, type II, AMHR, MISR2, MISRII, MRII, AMH type II receptor, MIS type II receptor, Muellerian inhibiting substance type II receptor, Mullerian inhibiting substance type II receptor, anti-Muellerian hormone type II rece
Gene ID:	269
NCBI Accession:	NP_065434 , NP_001158163

Application Details

Application Notes:	Western Blot: Approx 65 kDa band observed in Human Ovary lysates (calculated MW of 62.7 kDa according to NP_065434.1). Recommended concentration: 1-3 µg/mL. Peptide ELISA: antibody detection limit dilution 1:128000.
Restrictions:	For Research Use only

Handling

Format:	Liquid
Concentration:	0.5 mg/mL
Buffer:	Supplied at 0.5 mg/mL in Tris saline, 0.02 % sodium azide, pH 7.3 with 0.5 % bovine serum albumin.
Preservative:	Sodium azide
Precaution of Use:	This product contains Sodium azide: a POISONOUS AND HAZARDOUS SUBSTANCE which should be handled by trained staff only.
Handling Advice:	Minimize freezing and thawing.
Storage:	-20 °C
Storage Comment:	Aliquot and store at -20°C, with minimal freeze/thawing. A working aliquot may be refrigerated at 4°C for a few weeks and still remain viable.



Western Blotting

Image 1. ABIN2613381 (2µg/ml) staining of Human Ovary lysate (35µg protein in RIPA buffer). Primary incubation was 1 hour. Detected by chemiluminescence.