



[Go to Product page](#)

Datasheet for ABIN2613392  
**anti-ATP5F1 antibody (AA 142-153)**

2 Images

Overview

Quantity:	100 µg
Target:	ATP5F1
Binding Specificity:	AA 142-153
Reactivity:	Human
Host:	Goat
Clonality:	Polyclonal
Conjugate:	This ATP5F1 antibody is un-conjugated
Application:	Western Blotting (WB), ELISA, Immunohistochemistry (IHC)

Product Details

Purpose:	ATP5F1 (aa142-153)
Sequence:	SIQHIQNAID TE
Isotype:	IgG
Cross-Reactivity:	Human
Purification:	Purified from goat serum by ammonium sulphate precipitation followed by antigen affinity chromatography using the immunizing peptide.
Grade:	Verified

Target Details

Target:	ATP5F1
---------	--------

## Target Details

---

Alternative Name:	ATP5F1 ( <a href="#">ATP5F1 Products</a> )
Background:	ATP5F1, ATP synthase, H <sup>+</sup> transporting, mitochondrial Fo complex, subunit B1, PIG47, ATP synthase B chain, mitochondrial, ATP synthase subunit b, mitochondrial, ATP synthase, H <sup>+</sup> transporting, mitochondrial F0 complex, subunit B1, ATP synthase, H <sup>+</sup> transport
Gene ID:	515
NCBI Accession:	<a href="#">NP_001679</a>
Pathways:	<a href="#">Proton Transport</a> , <a href="#">Ribonucleoside Biosynthetic Process</a>

## Application Details

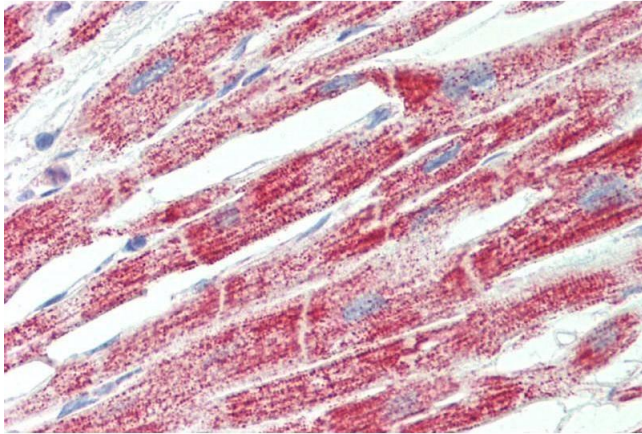
---

Application Notes:	<p>Immunohistochemistry: Paraffin embedded Human Heart. Recommended concentration: 5 µg/mL.</p> <p>Western Blot: Approx 25 kDa band observed in Human Heart lysates (calculated MW of 28.9 kDa according to NP_001679.2). This molecular weight is routinely observed by other sources. Recommended concentration: 0.03-0.1 µg/mL. Primary incubation was 1 hour.</p> <p>Peptide ELISA: antibody detection limit dilution 1:128000.</p>
Restrictions:	For Research Use only

## Handling

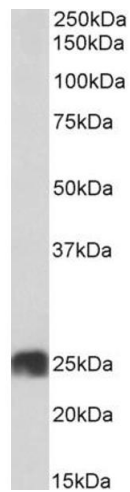
---

Format:	Liquid
Concentration:	0.5 mg/mL
Buffer:	Supplied at 0.5 mg/mL in Tris saline, 0.02 % sodium azide, pH 7.3 with 0.5 % bovine serum albumin.
Preservative:	Sodium azide
Precaution of Use:	This product contains Sodium azide: a POISONOUS AND HAZARDOUS SUBSTANCE which should be handled by trained staff only.
Handling Advice:	Minimize freezing and thawing.
Storage:	-20 °C
Storage Comment:	Aliquot and store at -20°C, with minimal freeze/thawing. A working aliquot may be refrigerated at 4°C for a few weeks and still remain viable.



### Immunohistochemistry

**Image 1.** ABIN2613392 (5 $\mu$ g/ml) staining of paraffin embedded Human Heart. Steamed antigen retrieval with citrate buffer pH 6, AP-staining.



### Western Blotting

**Image 2.** ABIN2613392 (0.03 $\mu$ g/ml) staining of Human Heart lysate (35 $\mu$ g protein in RIPA buffer). Detected by chemiluminescence.