

Datasheet for ABIN2613394
anti-BMP1 antibody (AA 284-296)

5 Images

[Go to Product page](#)

Overview

Quantity:	100 µg
Target:	BMP1
Binding Specificity:	AA 284-296
Reactivity:	Human, Mouse, Rat
Host:	Goat
Clonality:	Polyclonal
Conjugate:	This BMP1 antibody is un-conjugated
Application:	Western Blotting (WB), Immunohistochemistry (IHC), ELISA

Product Details

Purpose:	BMP1 (aa284-296)
Sequence:	DTIVPKYEVN GVK
Isotype:	IgG
Specificity:	This antibody is expected to recognize both reported isoforms (NP_001190.1, NP_006120.1).
Cross-Reactivity:	Cow, Dog, Human, Mouse, Pig, Rat
Purification:	Purified from goat serum by ammonium sulphate precipitation followed by antigen affinity chromatography using the immunizing peptide.
Grade:	Verified

Target Details

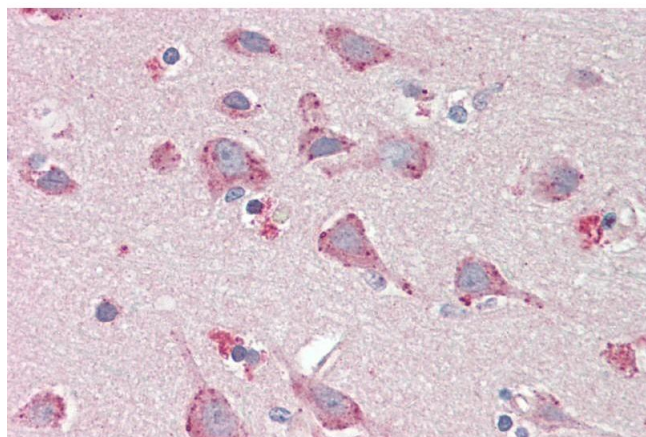
Target:	BMP1
Alternative Name:	BMP1 (BMP1 Products)
Background:	BMP1, bone morphogenetic protein 1, OI13, PCOLC, PCP, PCP2, TLD, mammalian tolloid protein, procollagen C-endopeptidase, procollagen C-proteinase
Gene ID:	649, 12153, 83470
NCBI Accession:	NP_001190 , NP_006120
Pathways:	Lipid Metabolism

Application Details

Application Notes:	Immunohistochemistry: Paraffin embedded Human Brain (Cortex) and Placenta. Recommended concentration: 5 µg/mL. Western Blot: Approx 110 kDa band observed in Human Heart and Human Kidney lysates and approx 100 kDa band observed in Rat Heart lysates and in cell lysates of cell line NIH3T3 (calculated MW of 111 kDa according to Human NP_006120.1, 97.7 kDa according to M Peptide ELISA: antibody detection limit dilution 1:128000.
Restrictions:	For Research Use only

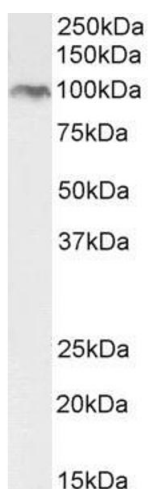
Handling

Format:	Liquid
Concentration:	0.5 mg/mL
Buffer:	Supplied at 0.5 mg/mL in Tris saline, 0.02 % sodium azide, pH 7.3 with 0.5 % bovine serum albumin.
Preservative:	Sodium azide
Precaution of Use:	This product contains Sodium azide: a POISONOUS AND HAZARDOUS SUBSTANCE which should be handled by trained staff only.
Handling Advice:	Minimize freezing and thawing.
Storage:	-20 °C
Storage Comment:	Aliquot and store at -20°C, with minimal freeze/thawing. A working aliquot may be refrigerated at 4°C for a few weeks and still remain viable.



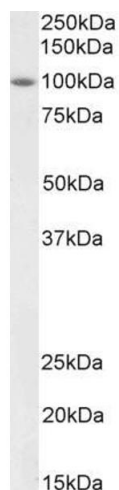
Immunohistochemistry

Image 1. ABIN2613394 (5µg/ml) staining of paraffin embedded Human Cortex. Steamed antigen retrieval with citrate buffer pH 6, AP-staining.



Western Blotting

Image 2. ABIN2613394 (2µg/ml) staining of NIH3T3 cell lysate (35µg protein in RIPA buffer). Detected by chemiluminescence.



Western Blotting

Image 3. Antibody (2µg/ml) staining of Rat Heart lysate (35µg protein in RIPA buffer). Primary incubation was 1 hour. Detected by chemiluminescence.

Please check the [product details page](#) for more images. Overall 5 images are available for ABIN2613394.