

Datasheet for ABIN2613398  
**anti-Caprin-1 antibody (Internal Region)**[Go to Product page](#)

## 2 Images

## Overview

Quantity:	100 µg
Target:	Caprin-1
Binding Specificity:	Internal Region
Reactivity:	Human
Host:	Goat
Clonality:	Polyclonal
Conjugate:	This Caprin-1 antibody is un-conjugated
Application:	ELISA, Western Blotting (WB), Immunohistochemistry (IHC)

## Product Details

Purpose:	CAPRIN1
Sequence:	EQRPKKEPID Q
Isotype:	IgG
Specificity:	This antibody is expected to recognize both reported isoforms (NP_005889.3, NP_976240.1).
Cross-Reactivity:	Dog, Human, Pig, Rat
Purification:	Purified from goat serum by ammonium sulphate precipitation followed by antigen affinity chromatography using the immunizing peptide.
Grade:	Verified

## Target Details

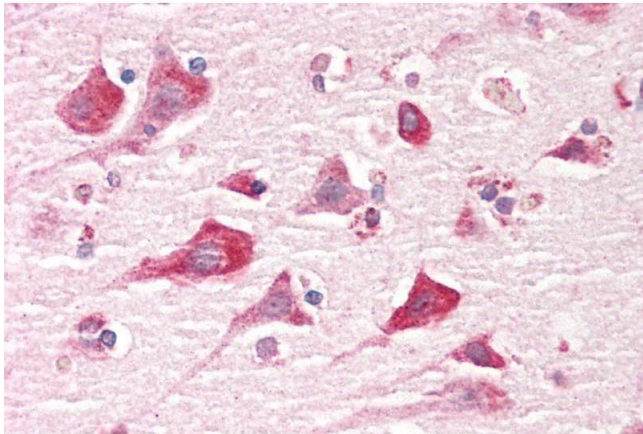
Target:	Caprin-1
Alternative Name:	CAPRIN1 ( <a href="#">Caprin-1 Products</a> )
Background:	CAPRIN1, cell cycle associated protein 1, GPIAP1, GPIP137, M11S1, RNG105, p137GPI, GPI-anchored membrane protein 1, GPI-anchored protein p137, GPI-p137, RNA granule protein 105, activation/proliferation-associated protein 1, caprin 1, caprin-1, cell cycle
Gene ID:	4076, 362173
NCBI Accession:	<a href="#">NP_005889</a> , <a href="#">NP_976240</a>

## Application Details

Application Notes:	<p>Immunohistochemistry: Paraffin embedded Human Brain (Cortex). Recommended concentration: 5 µg/mL.</p> <p>Western Blot: Approx 80+140 kDa bands observed in lysates of cell line Caco-2, HeLa, Jurkat and K562 (calculated MW of 78.4 kDa according to NP_005889.3). The ~140 kDa band corresponds to the reported p137 (Ellis and Luzio, J Biol Chem. 1995 Sep 1;270(35):2</p> <p>Peptide ELISA: antibody detection limit dilution 1:16000.</p>
Restrictions:	For Research Use only

## Handling

Format:	Liquid
Concentration:	0.5 mg/mL
Buffer:	Supplied at 0.5 mg/mL in Tris saline, 0.02 % sodium azide, pH 7.3 with 0.5 % bovine serum albumin.
Preservative:	Sodium azide
Precaution of Use:	This product contains Sodium azide: a POISONOUS AND HAZARDOUS SUBSTANCE which should be handled by trained staff only.
Handling Advice:	Minimize freezing and thawing.
Storage:	-20 °C
Storage Comment:	Aliquot and store at -20°C, with minimal freeze/thawing. A working aliquot may be refrigerated at 4°C for a few weeks and still remain viable.



#### Immunohistochemistry

**Image 1.** ABIN2613398 (5µg/ml) staining of paraffin embedded Human Cortex. Steamed antigen retrieval with citrate buffer pH 6, AP-staining.



#### Western Blotting

**Image 2.** ABIN2613398 (0.3µg/ml) staining of Jurkat (A) and HeLa (B) lysates (35µg protein in RIPA buffer). Primary incubation was 1 hour. Detected by chemiluminescence.