



[Go to Product page](#)

Datasheet for ABIN2613414

## anti-Cullin 3 antibody (Internal Region)

### 1 Image

#### Overview

Quantity:	100 µg
Target:	Cullin 3 (CUL3)
Binding Specificity:	Internal Region
Reactivity:	Human
Host:	Goat
Clonality:	Polyclonal
Conjugate:	This Cullin 3 antibody is un-conjugated
Application:	Western Blotting (WB), ELISA

#### Product Details

Purpose:	Cullin 3
Sequence:	AQVTGSNTRK HILQ
Isotype:	IgG
Cross-Reactivity:	Human, Mouse, Rat
Purification:	Purified from goat serum by ammonium sulphate precipitation followed by antigen affinity chromatography using the immunizing peptide.
Grade:	Verified

#### Target Details

Target:	Cullin 3 (CUL3)
---------	-----------------

## Target Details

---

Alternative Name: CUL3 ([CUL3 Products](#))

Background: CUL3, cullin 3, KIAA0617

Gene ID: 8452

NCBI Accession: [NP\\_003581](#)

Pathways: [M Phase](#)

## Application Details

---

Application Notes: Western Blot: Approx 90 kDa band observed in Human Heart lysates (calculated MW of 88.9 kDa according to NP\_003581.1). Recommended concentration: 1-3 µg/mL.  
Peptide ELISA: antibody detection limit dilution 1:2000.

Restrictions: For Research Use only

## Handling

---

Format: Liquid

Concentration: 0.5 mg/mL

Buffer: Supplied at 0.5 mg/mL in Tris saline, 0.02 % sodium azide, pH 7.3 with 0.5 % bovine serum albumin.

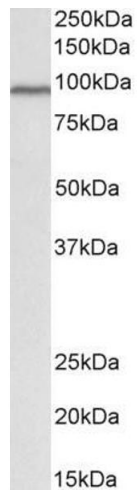
Preservative: Sodium azide

Precaution of Use: This product contains Sodium azide: a POISONOUS AND HAZARDOUS SUBSTANCE which should be handled by trained staff only.

Handling Advice: Minimize freezing and thawing.

Storage: -20 °C

Storage Comment: Aliquot and store at -20°C, with minimal freeze/thawing. A working aliquot may be refrigerated at 4°C for a few weeks and still remain viable.



### Western Blotting

**Image 1.** ABIN2613414 (1µg/ml) staining of Human Heart lysate (35µg protein in RIPA buffer). Primary incubation was 1 hour. Detected by chemiluminescence.