

Datasheet for ABIN2613415  
**anti-CX3CL1 antibody (AA 214-226)**



[Go to Product page](#)

1 Image

## Overview

|                      |                                       |
|----------------------|---------------------------------------|
| Quantity:            | 100 µg                                |
| Target:              | CX3CL1                                |
| Binding Specificity: | AA 214-226                            |
| Reactivity:          | Human                                 |
| Host:                | Goat                                  |
| Clonality:           | Polyclonal                            |
| Conjugate:           | This CX3CL1 antibody is un-conjugated |
| Application:         | Western Blotting (WB), ELISA          |

## Product Details

|                   |   |
|-------------------|---|
| Purpose:          | CX3CL1 / fractalkine (aa214-226)  |
| Sequence:         | KTSEAPSTQD PST  |
| Isotype:          | IgG   |
| Cross-Reactivity: | Human   |
| Purification:     | Purified from goat serum by ammonium sulphate precipitation followed by antigen affinity chromatography using the immunizing peptide. |
| Grade:            | Verified  |

## Target Details

|         |        |
|---------|--------|
| Target: | CX3CL1 |
|---------|--------|

## Target Details

---

|                   |   |
|-------------------|---|
| Alternative Name: | CX3CL1 ( <a href="#">CX3CL1 Products</a> )  |
| Background:       | CX3CL1, chemokine (C-X3-C motif) ligand 1, ABCD-3, C3Xkine, CXC3, CXC3C, NTN, NTT, SCYD1, fractalkine, neurotactin, C-X3-C motif chemokine 1, CX3C membrane-anchored chemokine, fractalkine, small inducible cytokine subfamily D (Cys-X3-Cys), member 1 (fract |
| Gene ID:          | 6376  |
| NCBI Accession:   | <a href="#">NP_002987</a>   |
| Pathways:         | <a href="#">Synaptic Membrane</a>   |

## Application Details

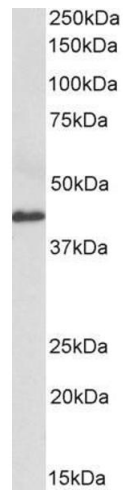
---

|                    |  |
|--------------------|--|
| Application Notes: | Western Blot: Approx 45 kDa band observed in Human Colorectal cancer lysates (calculated MW of 42.2 kDa according to NP_002987.1). Recommended concentration: 0.3-1 µg/mL.<br>Peptide ELISA: antibody detection limit dilution 1:128000. |
| Restrictions:      | For Research Use only  |

## Handling

---

|                    |  |
|--------------------|--|
| Format:            | Liquid   |
| Concentration:     | 0.5 mg/mL  |
| Buffer:            | Supplied at 0.5 mg/mL in Tris saline, 0.02 % sodium azide, pH 7.3 with 0.5 % bovine serum albumin.   |
| Preservative:      | Sodium azide   |
| Precaution of Use: | This product contains Sodium azide: a POISONOUS AND HAZARDOUS SUBSTANCE which should be handled by trained staff only.                         |
| Handling Advice:   | Minimize freezing and thawing.   |
| Storage:           | -20 °C   |
| Storage Comment:   | Aliquot and store at -20°C, with minimal freeze/thawing. A working aliquot may be refrigerated at 4°C for a few weeks and still remain viable. |



### Western Blotting

**Image 1.** ABIN2613415 (0.3 $\mu$ g/ml) staining of Human Colorectal cancer lysate (35 $\mu$ g protein in RIPA buffer). Primary incubation was 1 hour. Detected by chemiluminescence.