



[Go to Product page](#)

Datasheet for ABIN2613420
anti-SLC29A1 antibody (N-Term)

1 Image

Overview

Quantity:	100 µg
Target:	SLC29A1
Binding Specificity:	N-Term
Reactivity:	Human
Host:	Goat
Clonality:	Polyclonal
Conjugate:	This SLC29A1 antibody is un-conjugated
Application:	Western Blotting (WB), ELISA

Product Details

Purpose:	ENT1
Sequence:	TSHQPQDRYK AVW
Isotype:	IgG
Specificity:	Reported variants represent identical protein: NP_001071642.1, NP_001071645.1, NP_001071644.1, NP_004946.1, NP_001071643.1
Cross-Reactivity:	Cow, Dog, Human, Mouse, Rat
Purification:	Purified from goat serum by ammonium sulphate precipitation followed by antigen affinity chromatography using the immunizing peptide.
Grade:	Verified

Target Details

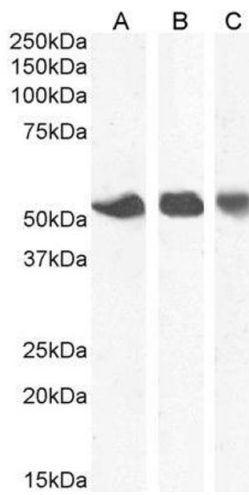
Target:	SLC29A1
Alternative Name:	SLC29A1 (SLC29A1 Products)
Background:	SLC29A1, solute carrier family 29 (nucleoside transporters), member 1, ENT1, MGC1465, MGC3778, equilibrative nitrobenzylmercaptapurine riboside (NBMPR)-sensitive nucleoside transporter, equilibrative nucleoside transporter 1, nucleoside transporter, es-ty
Gene ID:	2030
NCBI Accession:	NP_001071643
Pathways:	Carbohydrate Homeostasis , Synaptic Membrane

Application Details

Application Notes:	Western Blot: Approx 50-55 kDa band observed in Human Placenta, Spleen and Breast lysates (calculated MW of 50.2 kDa according to NP_001071643.1). Recommended concentration: 0.3-1 µg/mL. Primary incubation 1 hour at room temperature. Peptide ELISA: antibody detection limit dilution 1:4000.
Restrictions:	For Research Use only

Handling

Format:	Liquid
Concentration:	0.5 mg/mL
Buffer:	Supplied at 0.5 mg/mL in Tris saline, 0.02 % sodium azide, pH 7.3 with 0.5 % bovine serum albumin.
Preservative:	Sodium azide
Precaution of Use:	This product contains Sodium azide: a POISONOUS AND HAZARDOUS SUBSTANCE which should be handled by trained staff only.
Handling Advice:	Minimize freezing and thawing.
Storage:	-20 °C
Storage Comment:	Aliquot and store at -20°C, with minimal freeze/thawing. A working aliquot may be refrigerated at 4°C for a few weeks and still remain viable.



Western Blotting

Image 1. ABIN2613420 (1 μ g/ml) staining of Human Breast (A), Placenta (B) and Spleen (C) lysate. (35 μ g protein in RIPA buffer). Detected by chemiluminescence.