



[Go to Product page](#)

Datasheet for ABIN2613436  
**anti-HOXA5 antibody (AA 157-168)**

2 Images

### Overview

Quantity:	100 µg
Target:	HOXA5
Binding Specificity:	AA 157-168
Reactivity:	Human, Pig
Host:	Goat
Clonality:	Polyclonal
Conjugate:	This HOXA5 antibody is un-conjugated
Application:	Western Blotting (WB), ELISA, Immunohistochemistry (IHC)

### Product Details

Purpose:	HOXA5 (aa157-168)
Sequence:	SEQASAQSEP SP
Isotype:	IgG
Cross-Reactivity:	Cow, Human, Pig
Purification:	Purified from goat serum by ammonium sulphate precipitation followed by antigen affinity chromatography using the immunizing peptide.
Grade:	Verified

### Target Details

Target:	HOXA5
---------	-------

## Target Details

---

Alternative Name:	HOXA5 ( <a href="#">HOXA5 Products</a> )
Background:	HOXA5, homeobox A5, HOX1, HOX1.3, HOX1C, homeo box 1C, homeo box A5, homeobox protein HOXA5, homeobox protein Hox-1C, homeobox protein Hox-A5
Gene ID:	3202
NCBI Accession:	<a href="#">NP_061975</a>

## Application Details

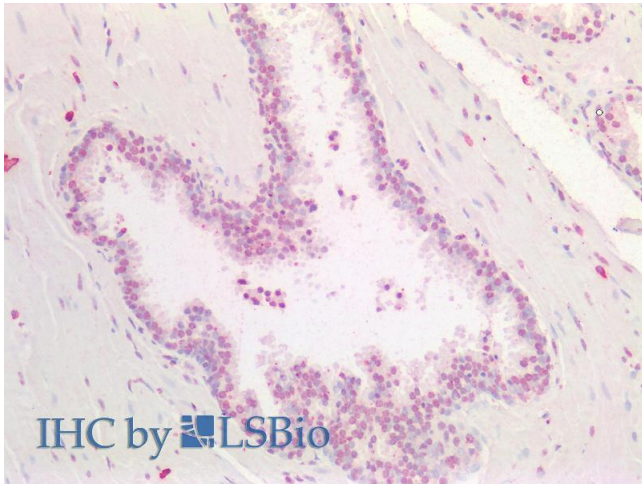
---

Application Notes:	Immunohistochemistry: Paraffin embedded Human Prostate. Recommended concentration: 5 µg/mL. Western Blot: Approx 30 kDa band observed in Pig Kidney lysates (calculated MW of 29.3 kDa according to Pig NP_001182161.1). Recommended concentration: 1-3 µg/mL. Peptide ELISA: antibody detection limit dilution 1:2000.
Restrictions:	For Research Use only

## Handling

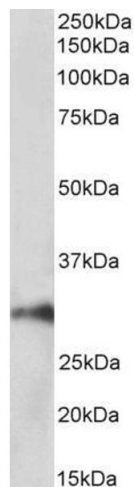
---

Format:	Liquid
Concentration:	0.5 mg/mL
Buffer:	Supplied at 0.5 mg/mL in Tris saline, 0.02 % sodium azide, pH 7.3 with 0.5 % bovine serum albumin.
Preservative:	Sodium azide
Precaution of Use:	This product contains Sodium azide: a POISONOUS AND HAZARDOUS SUBSTANCE which should be handled by trained staff only.
Handling Advice:	Minimize freezing and thawing.
Storage:	-20 °C
Storage Comment:	Aliquot and store at -20°C, with minimal freeze/thawing. A working aliquot may be refrigerated at 4°C for a few weeks and still remain viable.



### Immunohistochemistry

**Image 1.** ABIN2613436 (5µg/ml) staining of paraffin embedded Human Prostate. Steamed antigen retrieval with citrate buffer pH 6, AP-staining.



### Western Blotting

**Image 2.** ABIN2613436 (1µg/ml) staining of Pig Kidney lysate (35µg protein in RIPA buffer). Primary incubation was 1 hour. Detected by chemiluminescence.