

Datasheet for ABIN2613437  
**anti-HS3ST1 antibody (C-Term)**



[Go to Product page](#)

1 Image

### Overview

Quantity:	100 µg
Target:	HS3ST1
Binding Specificity:	C-Term
Reactivity:	Human
Host:	Goat
Clonality:	Polyclonal
Conjugate:	This HS3ST1 antibody is un-conjugated
Application:	ELISA, Western Blotting (WB)

### Product Details

Purpose:	HS3ST1
Sequence:	NKLHEYFHEP NKK
Isotype:	IgG
Cross-Reactivity:	Cow, Human
Purification:	Purified from goat serum by ammonium sulphate precipitation followed by antigen affinity chromatography using the immunizing peptide.
Grade:	Verified

### Target Details

Target:	HS3ST1
---------	--------

## Target Details

---

Alternative Name:	HS3ST1 ( <a href="#">HS3ST1 Products</a> )
Background:	HS3ST1, heparan sulfate (glucosamine) 3-O-sulfotransferase 1, 3OST, 3OST1, 3-OST-1, h3-OST-1, heparan sulfate 3-O-sulfotransferase 1, heparan sulfate D-glucosaminyl 3-O-sulfotransferase 1, heparan sulfate glucosamine 3-O-sulfotransferase 1, heparin-glucos
Gene ID:	9957
NCBI Accession:	<a href="#">NP_005105</a>
Pathways:	<a href="#">Glycosaminoglycan Metabolic Process</a>

## Application Details

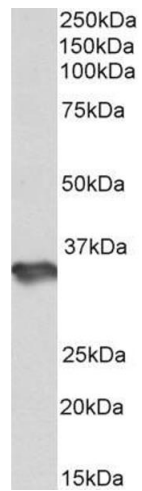
---

Application Notes:	Western Blot: Approx 35 kDa band observed in Human Brain (Cerebellum, Cerebral Cortex, Frontal Cortex) lysates (calculated MW of 35.8 kDa according to NP_005105.1). Recommended concentration: 1-3 µg/mL. Peptide ELISA: antibody detection limit dilution 1:128000.
Restrictions:	For Research Use only

## Handling

---

Format:	Liquid
Concentration:	0.5 mg/mL
Buffer:	Supplied at 0.5 mg/mL in Tris saline, 0.02 % sodium azide, pH 7.3 with 0.5 % bovine serum albumin.
Preservative:	Sodium azide
Precaution of Use:	This product contains Sodium azide: a POISONOUS AND HAZARDOUS SUBSTANCE which should be handled by trained staff only.
Handling Advice:	Minimize freezing and thawing.
Storage:	-20 °C
Storage Comment:	Aliquot and store at -20°C, with minimal freeze/thawing. A working aliquot may be refrigerated at 4°C for a few weeks and still remain viable.



### Western Blotting

**Image 1.** ABIN2613437 (1 $\mu$ g/ml) staining of Human Cerebellum lysate (35 $\mu$ g protein in RIPA buffer). Primary incubation was 1 hour. Detected by chemiluminescence.