

Datasheet for ABIN2613446
anti-LCP1 antibody (AA 277-291)[Go to Product page](#)

1 Image

Overview

| | |
|----------------------|-------------------------------------|
| Quantity: | 100 µg |
| Target: | LCP1 |
| Binding Specificity: | AA 277-291 |
| Reactivity: | Human |
| Host: | Goat |
| Clonality: | Polyclonal |
| Conjugate: | This LCP1 antibody is un-conjugated |
| Application: | Western Blotting (WB), ELISA |

Product Details

| | |
|-------------------|---------------------------------------------------------------------------------------------------------------------------------------|
| Purpose: | LCP1 / plastin-2 (aa277-291) |
| Sequence: | HLENAGCNKI GNFST |
| Isotype: | IgG |
| Cross-Reactivity: | Human |
| Purification: | Purified from goat serum by ammonium sulphate precipitation followed by antigen affinity chromatography using the immunizing peptide. |
| Grade: | Verified |

Target Details

| | |
|---------|------|
| Target: | LCP1 |
|---------|------|

Target Details

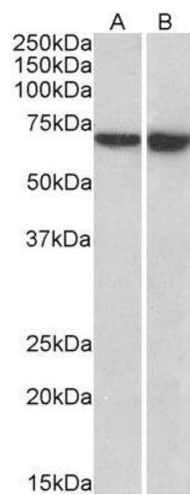
| | |
|-------------------|-----------------------------------------------------------------------------------------------------------------------------------------------------------------------------------------------------------------------------------------------------------------|
| Alternative Name: | LCP1 (LCP1 Products) |
| Background: | LCP1, CP64, DKFZp781A23186, FLJ25423, FLJ26114, FLJ39956, L-PLASTIN, LC64P, LPL, PLS2, lymphocyte cytosolic protein 1 (L-plastin), L-plastin, L-plastin (Lymphocyte cytosolic protein 1) (LCP-1) (LC64P), Lymphocyte cytosolic protein-1 (plasmin), OTTHUMP0000 |
| Gene ID: | 3936 |
| NCBI Accession: | NP_002289 |

Application Details

| | |
|--------------------|----------------------------------------------------------------------------------------------------------------------------------------------------------------------------------------------------------------------------------------------|
| Application Notes: | Western Blot: Approx 70 kDa band observed in lysates of cell lines Daudi and U937 (calculated MW of 70.3 kDa according to NP_002289.2). Recommended concentration: 0.5-3 µg/mL. Peptide ELISA: antibody detection limit dilution 1:16000. |
| Restrictions: | For Research Use only |

Handling

| | |
|--------------------|------------------------------------------------------------------------------------------------------------------------------------------------|
| Format: | Liquid |
| Concentration: | 0.5 mg/mL |
| Buffer: | Supplied at 0.5 mg/mL in Tris saline, 0.02 % sodium azide, pH 7.3 with 0.5 % bovine serum albumin. |
| Preservative: | Sodium azide |
| Precaution of Use: | This product contains Sodium azide: a POISONOUS AND HAZARDOUS SUBSTANCE which should be handled by trained staff only. |
| Handling Advice: | Minimize freezing and thawing. |
| Storage: | -20 °C |
| Storage Comment: | Aliquot and store at -20°C, with minimal freeze/thawing. A working aliquot may be refrigerated at 4°C for a few weeks and still remain viable. |



Western Blotting

Image 1. ABIN2613446 (0.5µg/ml) staining of Daudi (A) and U937 (B) lysates (35µg protein in RIPA buffer). Primary incubation was 1 hour. Detected by chemiluminescence.