

Datasheet for ABIN2613449
anti-LYVE1 antibody (Internal Region)



[Go to Product page](#)

1 Image

Overview

Quantity:	100 µg
Target:	LYVE1
Binding Specificity:	Internal Region
Reactivity:	Human
Host:	Goat
Clonality:	Polyclonal
Conjugate:	This LYVE1 antibody is un-conjugated
Application:	Western Blotting (WB), ELISA

Product Details

Purpose:	LYVE1
Sequence:	STETEPFVEN K
Isotype:	IgG
Specificity:	This antibody binds to part of the extracellular domain.
Cross-Reactivity:	Human
Purification:	Purified from goat serum by ammonium sulphate precipitation followed by antigen affinity chromatography using the immunizing peptide.
Grade:	Verified

Target Details

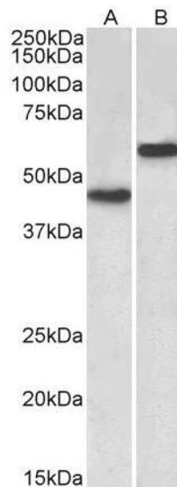
Target:	LYVE1
Alternative Name:	LYVE1 (LYVE1 Products)
Background:	LYVE1, lymphatic vessel endothelial hyaluronan receptor 1, CRSBP-1, HAR, LYVE-1, XLKD1, cell surface retention sequence binding protein-1, cell surface retention sequence-binding protein 1, extracellular link domain containing 1, extracellular link domain
Gene ID:	10894
NCBI Accession:	NP_006682
Pathways:	Glycosaminoglycan Metabolic Process

Application Details

Application Notes:	Western Blot: Approx 45 kDa band observed in Human Brain (Cerebellum) and 60 kDa in Human Liver lysates (calculated MW of 35.2 kDa according to NP_006682.2). The observed molecular weights correspond to the different glycosylated forms. Recommended concentration: 1 µg/mL. Peptide ELISA: antibody detection limit dilution 1:32000.
Comment:	fg
Restrictions:	For Research Use only

Handling

Format:	Liquid
Concentration:	0.5 mg/mL
Buffer:	Supplied at 0.5 mg/mL in Tris saline, 0.02 % sodium azide, pH 7.3 with 0.5 % bovine serum albumin.
Preservative:	Sodium azide
Precaution of Use:	This product contains Sodium azide: a POISONOUS AND HAZARDOUS SUBSTANCE which should be handled by trained staff only.
Handling Advice:	Minimize freezing and thawing.
Storage:	-20 °C
Storage Comment:	Aliquot and store at -20°C, with minimal freeze/thawing. A working aliquot may be refrigerated at 4°C for a few weeks and still remain viable.



Western Blotting

Image 1. ABIN2613449 (2 μ g/ml) staining of Human Cerebellum (A) and Liver (B) lysates (35 μ g protein in RIPA buffer). Primary incubation was 1 hour. Detected by chemiluminescence.