

Datasheet for ABIN2613452
anti-MSI2 antibody (N-Term)[Go to Product page](#)

3 Images

Overview

Quantity:	100 µg
Target:	MSI2
Binding Specificity:	N-Term
Reactivity:	Human, Mouse
Host:	Goat
Clonality:	Polyclonal
Conjugate:	This MSI2 antibody is un-conjugated
Application:	Western Blotting (WB), ELISA, Immunohistochemistry (IHC)

Product Details

Purpose:	MSI2 / musashi-2
Sequence:	QGTSGSANDS QHD
Isotype:	IgG
Specificity:	This antibody is expected to recognize isoform a (NP_620412.1) only.
Cross-Reactivity:	Dog, Human, Mouse
Purification:	Purified from goat serum by ammonium sulphate precipitation followed by antigen affinity chromatography using the immunizing peptide.
Grade:	Verified

Target Details

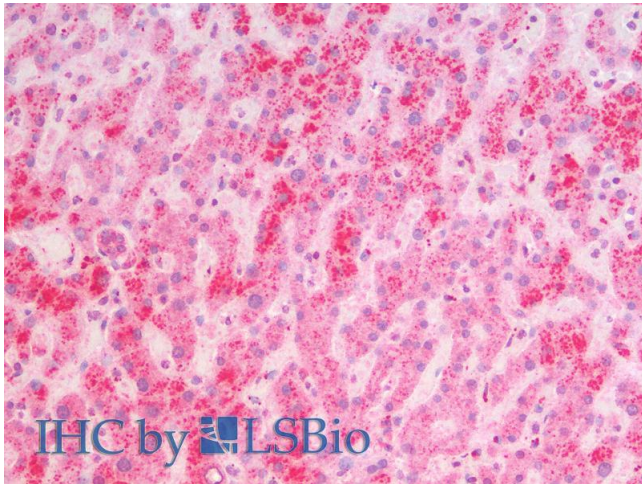
Target:	MSI2
Alternative Name:	MSI2 (MSI2 Products)
Background:	MSI2, musashi RNA-binding protein 2, MSI2H, RNA-binding protein Musashi homolog 2, musashi homolog 2, musashi-2
Gene ID:	124540, 76626
NCBI Accession:	NP_620412

Application Details

Application Notes:	Immunohistochemistry: Paraffin embedded Human Liver. Recommended concentration: 5 µg/mL. Western Blot: Approx 37 kDa band observed in lysates of cell line Kelly (calculated MW of 35.2 kDa according to NP_620412.1). Approx 35+37 kDa bands observed in fetal Mouse Brain lysates (calculated MW of 36.9 kDa according to NP_473384.1). Recommended conc Peptide ELISA: antibody detection limit dilution 1:128000.
Restrictions:	For Research Use only

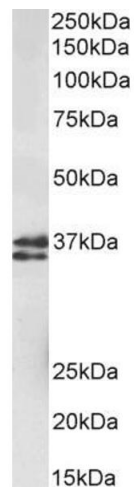
Handling

Format:	Liquid
Concentration:	0.5 mg/mL
Buffer:	Supplied at 0.5 mg/mL in Tris saline, 0.02 % sodium azide, pH 7.3 with 0.5 % bovine serum albumin.
Preservative:	Sodium azide
Precaution of Use:	This product contains Sodium azide: a POISONOUS AND HAZARDOUS SUBSTANCE which should be handled by trained staff only.
Handling Advice:	Minimize freezing and thawing.
Storage:	-20 °C
Storage Comment:	Aliquot and store at -20°C, with minimal freeze/thawing. A working aliquot may be refrigerated at 4°C for a few weeks and still remain viable.



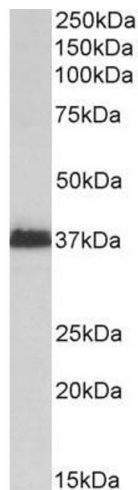
Immunohistochemistry

Image 1. ABIN2613452 (5µg/ml) staining of paraffin embedded Human Liver. Steamed antigen retrieval with citrate buffer pH 6, AP-staining.



Western Blotting

Image 2. ABIN2613452 (1µg/ml) staining of fetal Mouse Brain lysate (35µg protein in RIPA buffer). Detected by chemiluminescence.



Western Blotting

Image 3. ABIN2613452 (2µg/ml) staining of Kelly lysate (35µg protein in RIPA buffer). Detected by chemiluminescence.