



[Go to Product page](#)

Datasheet for ABIN2613455

## anti-STXBP3 antibody (Internal Region)

### 1 Image

#### Overview

Quantity:	100 µg
Target:	STXBP3
Binding Specificity:	Internal Region
Reactivity:	Mouse, Rat
Host:	Goat
Clonality:	Polyclonal
Conjugate:	This STXBP3 antibody is un-conjugated
Application:	Western Blotting (WB), ELISA

#### Product Details

Purpose:	MUNC18C
Sequence:	SKSIRRCKEI NIS
Isotype:	IgG
Cross-Reactivity:	Dog, Human, Mouse, Pig, Rat
Purification:	Purified from goat serum by ammonium sulphate precipitation followed by antigen affinity chromatography using the immunizing peptide.
Grade:	Verified

#### Target Details

Target:	STXBP3
---------	--------

## Target Details

---

Alternative Name:	STXBP3 ( <a href="#">STXBP3 Products</a> )
Background:	STXBP3, syntaxin binding protein 3, MUNC18-3, MUNC18C, PSP, UNC-18C, platelet Sec1 protein, protein unc-18 homolog 3, protein unc-18 homolog C, syntaxin 4 binding protein, syntaxin-binding protein 3, unc18-3
Gene ID:	6814, 20912, 114095
NCBI Accession:	<a href="#">NP_009200</a>
Pathways:	<a href="#">Hormone Transport</a>

## Application Details

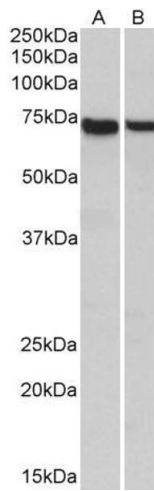
---

Application Notes:	Western Blot: Approx 70 kDa band observed in Mouse and Rat Spleen lysates (calculated MW of 68.0 kDa according to Rat NP_446089.1). Recommended concentration: 0.3-1 µg/mL. Peptide ELISA: antibody detection limit dilution 1:128000.
Restrictions:	For Research Use only

## Handling

---

Format:	Liquid
Concentration:	0.5 mg/mL
Buffer:	Supplied at 0.5 mg/mL in Tris saline, 0.02 % sodium azide, pH 7.3 with 0.5 % bovine serum albumin.
Preservative:	Sodium azide
Precaution of Use:	This product contains Sodium azide: a POISONOUS AND HAZARDOUS SUBSTANCE which should be handled by trained staff only.
Handling Advice:	Minimize freezing and thawing.
Storage:	-20 °C
Storage Comment:	Aliquot and store at -20°C, with minimal freeze/thawing. A working aliquot may be refrigerated at 4°C for a few weeks and still remain viable.



### Western Blotting

**Image 1.** ABIN2613455 (1 $\mu$ g/ml) staining of Mouse (A) and Rat (B) Spleen lysates (35 $\mu$ g protein in RIPA buffer). Primary incubation was 1 hour. Detected by chemiluminescence.