

Datasheet for ABIN2613461  
**anti-NME1 antibody (C-Term)**



[Go to Product page](#)

1 Image

## Overview

Quantity:	100 µg
Target:	NME1
Binding Specificity:	C-Term
Reactivity:	Human
Host:	Goat
Clonality:	Polyclonal
Conjugate:	This NME1 antibody is un-conjugated
Application:	Western Blotting (WB), ELISA

## Product Details

Purpose:	NME1
Sequence:	DYTSCAQNW I YE
Isotype:	IgG
Specificity:	This antibody is expected to recognize both reported isoforms (NP_937818.1, NP_000260.1).
Cross-Reactivity:	Human
Purification:	Purified from goat serum by ammonium sulphate precipitation followed by antigen affinity chromatography using the immunizing peptide.
Grade:	Verified

## Target Details

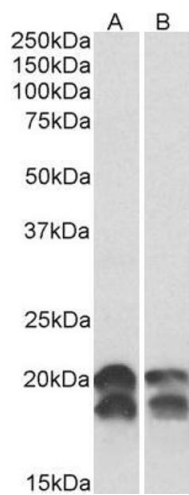
Target:	NME1
Alternative Name:	NME1 ( <a href="#">NME1 Products</a> )
Background:	NME1, AWD, GAAD, NB, NBS, NDPK-A, NDPKA, NM23, NM23-H1, non-metastatic cells 1, protein (NM23A) expressed in, NDP kinase A, OTTHUMP00000174772
Gene ID:	4830
NCBI Accession:	<a href="#">NP_937818</a> , <a href="#">NP_000260</a>
Pathways:	<a href="#">Apoptosis</a> , <a href="#">Nucleotide Phosphorylation</a> , <a href="#">Carbohydrate Homeostasis</a> , <a href="#">Ribonucleoside Biosynthetic Process</a>

## Application Details

Application Notes:	Western Blot: Approx 20+18 kDa bands observed in lysates of cell lines A549, HeLa and HepG2 (calculated MW of 19.7 kDa according to NP_937818.1 and 17.1 kDa according to NP_000260.1). Recommended concentration: 0.01-0.03 µg/mL. Peptide ELISA: antibody detection limit dilution 1:128000.
Restrictions:	For Research Use only

## Handling

Format:	Liquid
Concentration:	0.5 mg/mL
Buffer:	Supplied at 0.5 mg/mL in Tris saline, 0.02 % sodium azide, pH 7.3 with 0.5 % bovine serum albumin.
Preservative:	Sodium azide
Precaution of Use:	This product contains Sodium azide: a POISONOUS AND HAZARDOUS SUBSTANCE which should be handled by trained staff only.
Handling Advice:	Minimize freezing and thawing.
Storage:	-20 °C
Storage Comment:	Aliquot and store at -20°C, with minimal freeze/thawing. A working aliquot may be refrigerated at 4°C for a few weeks and still remain viable.



Western Blotting

**Image 1.** ABIN2613461 (0.01µg/ml) staining of A549 (A) and HeLa (B) lysates (35µg protein in RIPA buffer). Primary incubation was 1 hour. Detected by chemiluminescence.