

Datasheet for ABIN2613477

anti-PEDF antibody (Internal Region)[Go to Product page](#)**1** Image

Overview

Quantity:	100 µg
Target:	PEDF (SERPINF1)
Binding Specificity:	Internal Region
Reactivity:	Human
Host:	Goat
Clonality:	Polyclonal
Conjugate:	This PEDF antibody is un-conjugated
Application:	Western Blotting (WB), ELISA

Product Details

Purpose:	SERPINF1 / PEDF
Sequence:	KITGKPIKLT QVEHR
Isotype:	IgG
Cross-Reactivity:	Cow, Dog, Human, Pig
Purification:	Purified from goat serum by ammonium sulphate precipitation followed by antigen affinity chromatography using the immunizing peptide.
Grade:	Verified

Target Details

Target:	PEDF (SERPINF1)
---------	-----------------

Target Details

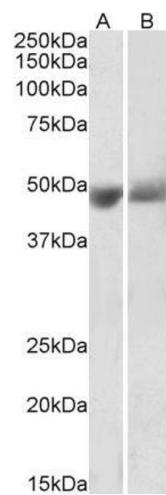
Alternative Name:	SERPINF1 (SERPINF1 Products)
Background:	SERPINF1, EPC-1, PEDF, PIG35, serpin peptidase inhibitor, clade F (alpha-2 antiplasmin, pigment epithelium derived factor), member 1, pigment epithelium-derived factor, proliferation-inducing protein 35, serine (or cysteine) proteinase inhibitor, clade F
Gene ID:	5176
NCBI Accession:	NP_002606

Application Details

Application Notes:	Western Blot: Approx 48 kDa band observed in Human Albumin-depleted Serum and Plasma lysates (calculated MW of 46.3 kDa according to NP_002606.3). Recommended concentration: 0.3-1 µg/mL. Peptide ELISA: antibody detection limit dilution 1:128000.
Restrictions:	For Research Use only

Handling

Format:	Liquid
Concentration:	0.5 mg/mL
Buffer:	Supplied at 0.5 mg/mL in Tris saline, 0.02 % sodium azide, pH 7.3 with 0.5 % bovine serum albumin.
Preservative:	Sodium azide
Precaution of Use:	This product contains Sodium azide: a POISONOUS AND HAZARDOUS SUBSTANCE which should be handled by trained staff only.
Handling Advice:	Minimize freezing and thawing.
Storage:	-20 °C
Storage Comment:	Aliquot and store at -20°C, with minimal freeze/thawing. A working aliquot may be refrigerated at 4°C for a few weeks and still remain viable.



Western Blotting

Image 1. ABIN2613477 (0.3µg/ml) staining of Human Albumin-depleted Plasma (A) and Serum (B) lysates (35µg protein in RIPA buffer). Primary incubation was 1 hour. Detected by chemiluminescence.