

Datasheet for ABIN2613478
anti-SLC40A1 antibody (AA 245-259)[Go to Product page](#)

2 Images

Overview

Quantity:	100 µg
Target:	SLC40A1
Binding Specificity:	AA 245-259
Reactivity:	Human
Host:	Goat
Clonality:	Polyclonal
Conjugate:	This SLC40A1 antibody is un-conjugated
Application:	ELISA, Flow Cytometry (FACS), Immunofluorescence (IF)

Product Details

Purpose:	SLC40A1 (aa245-259)
Sequence:	ELKQLNLHKD TEPKP
Isotype:	IgG
Cross-Reactivity:	Human
Purification:	Purified from goat serum by ammonium sulphate precipitation followed by antigen affinity chromatography using the immunizing peptide.
Grade:	Verified

Target Details

Target:	SLC40A1
---------	---------

Target Details

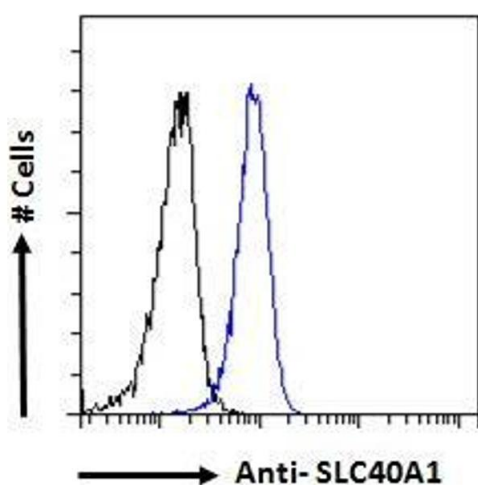
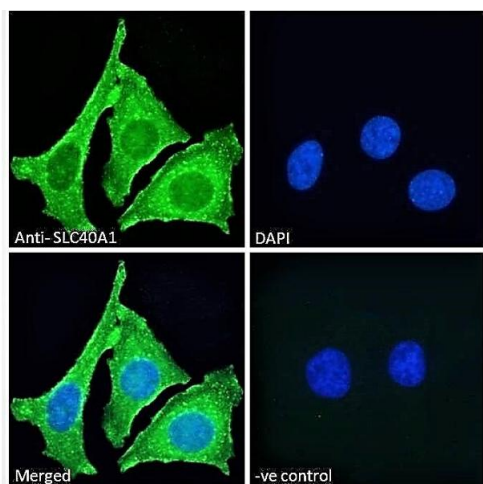
Alternative Name:	SLC40A1 (SLC40A1 Products)
Background:	SLC40A1, solute carrier family 40 (iron-regulated transporter), member 1, FPN1, HFE4, IREG1, MST079, MTP1, SLC11A3, iron regulated gene 1, putative ferroportin 1 variant IIIB, solute carrier family 11 (proton-coupled divalent metal ion transporters), memb
Gene ID:	30061
NCBI Accession:	NP_055400
Pathways:	Transition Metal Ion Homeostasis

Application Details

Application Notes:	Western Blot: Preliminary testing showed a band at approx 60 kDa in Human Breast and Colonr lysate after 1-2 µg/mL antibody staining (calculated MW of 62.5 kDa according to NP_055400.1). Primary incubation 1 hour at room temperature. Peptide ELISA: antibody detection limit dilution 1:128000.
Comment:	Immunofluorescence: Strong expression of the protein seen in the cytoplasm and plasma membranes of HeLa cells. Recommended concentration: 10µg/ml. Flow Cytometry: Flow cytometric analysis of HeLa cells. Recommended con
Restrictions:	For Research Use only

Handling

Format:	Liquid
Concentration:	0.5 mg/mL
Buffer:	Supplied at 0.5 mg/mL in Tris saline, 0.02 % sodium azide, pH 7.3 with 0.5 % bovine serum albumin.
Preservative:	Sodium azide
Precaution of Use:	This product contains Sodium azide: a POISONOUS AND HAZARDOUS SUBSTANCE which should be handled by trained staff only.
Handling Advice:	Minimize freezing and thawing.
Storage:	-20 °C
Storage Comment:	Aliquot and store at -20°C, with minimal freeze/thawing. A working aliquot may be refrigerated at 4°C for a few weeks and still remain viable.



Immunofluorescence

Image 1. ABIN2613478 Immunofluorescence analysis of paraformaldehyde fixed HeLa cells, permeabilized with 0.15% Triton. Primary incubation 1hr (10ug/ml) followed by Alexa Fluor 488 secondary antibody (2ug/ml), showing cytoplasmic and plasma membrane staining. The nuclear stain is DAPI (blue). Negative control: Unimmunized goat IgG (10ug/ml) followed by Alexa Fluor 488 secondary antibody (2ug/ml).

Flow Cytometry

Image 2. ABIN2613478 Flow cytometric analysis of paraformaldehyde fixed HeLa cells (blue line), permeabilized with 0.5% Triton. Primary incubation 1hr (10ug/ml) followed by Alexa Fluor 488 secondary antibody (1ug/ml). IgG control: Unimmunized goat IgG (black line) followed by Alexa Fluor 488 secondary antibody.