

Datasheet for ABIN2613479
anti-Sclerostin antibody (C-Term)[Go to Product page](#)

1 Image

Overview

Quantity:	100 µg
Target:	Sclerostin (SOST)
Binding Specificity:	C-Term
Reactivity:	Human
Host:	Goat
Clonality:	Polyclonal
Conjugate:	This Sclerostin antibody is un-conjugated
Application:	Immunohistochemistry (IHC), ELISA

Product Details

Purpose:	SOST
Sequence:	PRARSAKANQ AELEN
Isotype:	IgG
Cross-Reactivity:	Cow, Dog, Human, Mouse, Rat
Purification:	Purified from goat serum by ammonium sulphate precipitation followed by antigen affinity chromatography using the immunizing peptide.
Grade:	Verified

Target Details

Target:	Sclerostin (SOST)
---------	-------------------

Target Details

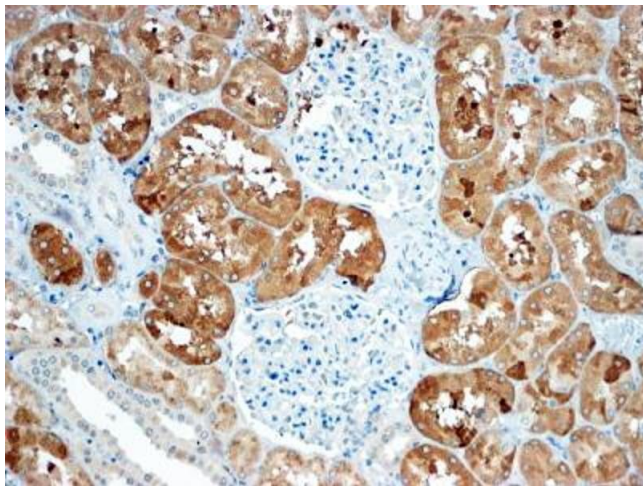
Alternative Name:	SOST (SOST Products)
Background:	SOST, sclerosteosis, VBCH, sclerostin
Gene ID:	50964, 74499, 80722
NCBI Accession:	NP_079513

Application Details

Application Notes:	Immunohistochemistry: In paraffin embedded Human Kidney shows cytoplasm staining exclusively in the PCT. Recommended concentration: 4-6 µg/mL. Peptide ELISA: antibody detection limit dilution 1:32000.
Restrictions:	For Research Use only

Handling

Format:	Liquid
Concentration:	0.5 mg/mL
Buffer:	Supplied at 0.5 mg/mL in Tris saline, 0.02 % sodium azide, pH 7.3 with 0.5 % bovine serum albumin.
Preservative:	Sodium azide
Precaution of Use:	This product contains Sodium azide: a POISONOUS AND HAZARDOUS SUBSTANCE which should be handled by trained staff only.
Handling Advice:	Minimize freezing and thawing.
Storage:	-20 °C
Storage Comment:	Aliquot and store at -20°C, with minimal freeze/thawing. A working aliquot may be refrigerated at 4°C for a few weeks and still remain viable.



Immunohistochemistry

Image 1. ABIN2613479 (4µg/ml) staining of paraffin embedded Human Kidney. Steamed antigen retrieval with Tris/EDTA buffer pH 9, HRP-staining.