

Datasheet for ABIN2613481
anti-SP140 antibody (AA 29-41)[Go to Product page](#)

1 Image

Overview

| | |
|----------------------|--------------------------------------|
| Quantity: | 100 µg |
| Target: | SP140 |
| Binding Specificity: | AA 29-41 |
| Reactivity: | Human |
| Host: | Goat |
| Clonality: | Polyclonal |
| Conjugate: | This SP140 antibody is un-conjugated |
| Application: | Western Blotting (WB), ELISA |

Product Details

| | |
|-------------------|---|
| Purpose: | SP140 (aa29-41) |
| Sequence: | EGQNLQEQVC PEP |
| Isotype: | IgG |
| Specificity: | This antibody is expected to recognize all reported isoforms (NP_009168.4, NP_001005176.1, NP_001265380.1, NP_001265381.1, NP_001265382.1). |
| Cross-Reactivity: | Human |
| Purification: | Purified from goat serum by ammonium sulphate precipitation followed by antigen affinity chromatography using the immunizing peptide. |
| Grade: | Verified |

Target Details

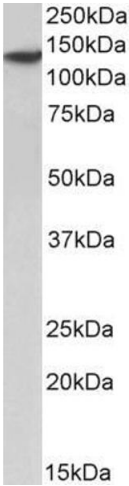
| | |
|-------------------|---|
| Target: | SP140 |
| Alternative Name: | SP140 (SP140 Products) |
| Background: | SP140, SP140 nuclear body protein, LYSP100, LYSP100-A, LYSP100-B, lymphoid-restricted homolog of Sp100, lymphoid-specific SP100 homolog, nuclear autoantigen Sp-140, nuclear body protein SP140, speckled 140 kDa |
| Gene ID: | 11262 |
| NCBI Accession: | NP_009168 , NP_001005176 , NP_001265380 , NP_001265381 , NP_001265382 |

Application Details

| | |
|--------------------|--|
| Application Notes: | Western Blot: Approx 140 kDa band observed in Human Spleen lysates (calculated MW of 98.2 kDa according to NP_009168.4). Recommended concentration: 1-3 µg/mL. Peptide ELISA: antibody detection limit dilution 1:128000. |
| Restrictions: | For Research Use only |

Handling

| | |
|--------------------|--|
| Format: | Liquid |
| Concentration: | 0.5 mg/mL |
| Buffer: | Supplied at 0.5 mg/mL in Tris saline, 0.02 % sodium azide, pH 7.3 with 0.5 % bovine serum albumin. |
| Preservative: | Sodium azide |
| Precaution of Use: | This product contains Sodium azide: a POISONOUS AND HAZARDOUS SUBSTANCE which should be handled by trained staff only. |
| Handling Advice: | Minimize freezing and thawing. |
| Storage: | -20 °C |
| Storage Comment: | Aliquot and store at -20°C, with minimal freeze/thawing. A working aliquot may be refrigerated at 4°C for a few weeks and still remain viable. |



Western Blotting

Image 1. ABIN2613481 (2µg/ml) staining of Human Spleen lysate (35µg protein in RIPA buffer). Primary incubation was 1 hour. Detected by chemiluminescence.