

Datasheet for ABIN2613493  
**anti-Vimentin antibody (C-Term)**



[Go to Product page](#)

5 Images

## Overview

Quantity:	100 µg
Target:	Vimentin (VIM)
Binding Specificity:	C-Term
Reactivity:	Human, Mouse, Rat
Host:	Goat
Clonality:	Polyclonal
Conjugate:	This Vimentin antibody is un-conjugated
Application:	Western Blotting (WB), Immunohistochemistry (IHC), ELISA, Immunofluorescence (IF), Flow Cytometry (FACS)

## Product Details

Purpose:	Vimentin
Sequence:	QVINETSQHH DDLE
Isotype:	IgG
Cross-Reactivity:	Cow, Dog, Human, Mouse, Pig, Rat
Purification:	Purified from goat serum by ammonium sulphate precipitation followed by antigen affinity chromatography using the immunizing peptide.
Grade:	Verified

## Target Details

---

Target:	Vimentin (VIM)
Alternative Name:	VIM ( <a href="#">VIM Products</a> )
Background:	VIM, vimentin, FLJ36605
Gene ID:	7431, 22352, 81818
NCBI Accession:	<a href="#">NP_003371</a>
Pathways:	<a href="#">Caspase Cascade in Apoptosis</a>

## Application Details

---

Application Notes:	Immunohistochemistry: Paraffin embedded Human Kidney. Recommended concentration: 5 $\mu$ g/mL. Western Blot: Approx 55 kDa band observed in lysates of cell line HeLa and Jurkat and in Mouse Ovary lysates, and approx. 55-60 kDa band in Rat Ovary lysates (calculated MW of 53.7 kDa according to Human NP_003371.2, Mouse NP_035831.2 and Rat NP_112402.1). Peptide ELISA: antibody detection limit dilution 1:4000.
Comment:	<b>Flow Cytometry:</b> Flow cytometric analysis of HeLa cells. Recommended concentration: 10 $\mu$ g/ml. <b>Immunofluorescence:</b> Strong expression of the protein seen in the cytoplasm/Intermediate filaments of U2OS cells. Recommended conc
Restrictions:	For Research Use only

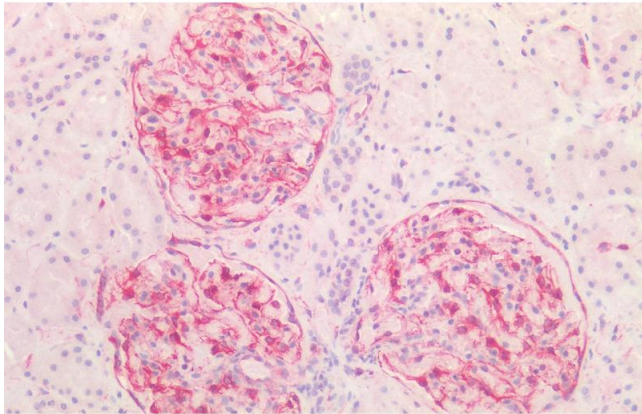
## Handling

---

Format:	Liquid
Concentration:	0.5 mg/mL
Buffer:	Supplied at 0.5 mg/mL in Tris saline, 0.02 % sodium azide, pH 7.3 with 0.5 % bovine serum albumin.
Preservative:	Sodium azide
Precaution of Use:	This product contains Sodium azide: a POISONOUS AND HAZARDOUS SUBSTANCE which should be handled by trained staff only.
Handling Advice:	Minimize freezing and thawing.
Storage:	-20 $^{\circ}$ C
Storage Comment:	Aliquot and store at -20 $^{\circ}$ C, with minimal freeze/thawing. A working aliquot may be refrigerated

at 4°C for a few weeks and still remain viable.

Images



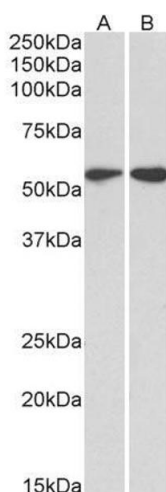
**Immunohistochemistry**

**Image 1.** (ABIN2613493) (5 µg/mL) staining of paraffin embedded Human Kidney. Steamed antigen retrieval with citrate buffer pH 6, AP-staining.



**Western Blotting**

**Image 2.** ABIN2613493 (0.1µg/ml) staining of Mouse (A) and (2µg/ml) Rat (B) Ovary lysate (35µg protein in RIPA buffer). Primary incubation was 1 hour. Detected by chemiluminescence.



**Western Blotting**

**Image 3.** ABIN2613493 (2µg/ml) staining of HeLa (A) and Jurkat (B) lysates (35µg protein in RIPA buffer). Primary incubation was 1 hour. Detected by chemiluminescence.

Please check the [product details page](#) for more images. Overall 5 images are available for ABIN2613493.