

Datasheet for ABIN2613803
anti-ABI1 antibody (AA 325-375)



[Go to Product page](#)

1 Image

Overview

Quantity:	50 µL
Target:	ABI1
Binding Specificity:	AA 325-375
Reactivity:	Human, Mouse
Host:	Rabbit
Clonality:	Polyclonal
Application:	Immunohistochemistry (IHC), Immunohistochemistry (Paraffin-embedded Sections) (IHC (p)), Immunofluorescence (IF)

Product Details

Brand:	IHC-plus™
Isotype:	IgG
Specificity:	Region between residue 325 and 375 of human ablinteractor 1 using the numbering given in entry NP_005461.2 (GenelD 10006).
Purification:	Immunoaffinity purified

Target Details

Target:	ABI1
Alternative Name:	ABI1 / ABI-1 (ABI1 Products)
Background:	Name/Gene ID: ABI1

Target Details

Synonyms: ABI1, Abelson interactor 1, Abl-interactor protein 1 long, ABI-1, Abl-interactor 1, Abl interactor 1, Abl-binding protein 4, ABLBP4, NAP1BP, Nap1 binding protein, SSH3BP1, Nap1-binding protein, E3B1, Eps8-binding protein, Interactor protein AblBP4, SSH3BP

Gene ID: 10006

Pathways: [RTK Signaling](#), [Response to Water Deprivation](#), [ER-Nucleus Signaling](#)

Application Details

Application Notes: Approved: IF (1:50 - 1:500), IHC, IHC-P (1:100)

Usage: Immunohistochemistry: Antigen retrieval is recommended. Antigen retrieval with citrate buffer will enhance staining. Likely to work with frozen sections. In some cases, the antibody may be diluted further than indicated. Human controls: Metastatic Lym pH Node, Ovarian Carcinoma.

Comment: Target Species of Antibody: Human

Restrictions: For Research Use only

Handling

Format: Liquid

Concentration: Lot specific

Buffer: Tris-buffered saline, 0.1 % BSA, 0.09 % sodium azide.

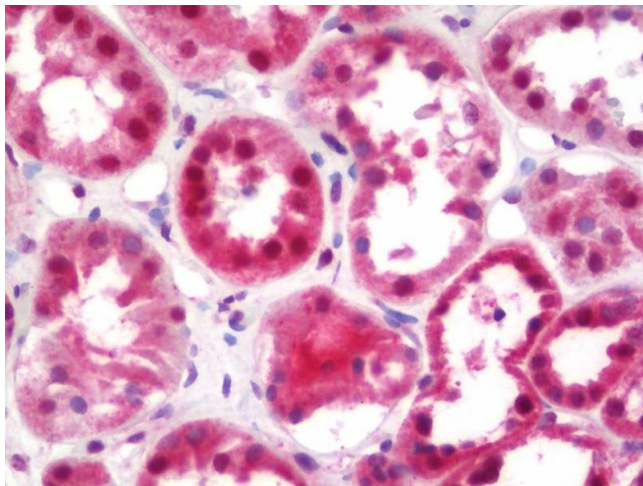
Preservative: Sodium azide

Precaution of Use: This product contains Sodium azide: a POISONOUS AND HAZARDOUS SUBSTANCE which should be handled by trained staff only.

Storage: 4 °C

Storage Comment: Store at 2-8°C for up to 1 year.

Expiry Date: 12 months



Immunohistochemistry

Image 1. Anti-ABI1 / ABI-1 antibody IHC staining of human kidney. Immunohistochemistry of formalin-fixed, paraffin-embedded tissue after heat-induced antigen retrieval. Antibody dilution 1:100.