

Datasheet for ABIN2614264
anti-ACVR2B antibody (AA 287-336)



[Go to Product page](#)

1 Image

Overview

Quantity:	50 µg
Target:	ACVR2B
Binding Specificity:	AA 287-336
Reactivity:	Human, Mouse, Rat, Dog, Cow, Guinea Pig, Horse, Sheep, Zebrafish (Danio rerio), Pig, Bat, Hamster, Monkey
Host:	Rabbit
Clonality:	Polyclonal
Conjugate:	This ACVR2B antibody is un-conjugated
Application:	Western Blotting (WB), Immunohistochemistry (IHC), Immunohistochemistry (Paraffin-embedded Sections) (IHC (p))

Product Details

Brand:	IHC-plus™
Immunogen:	<p>Synthetic peptide located between aa287-336 of human ACVR2B (Q13705, NP_001097).</p> <p>Percent identity by BLAST analysis: Human, Chimpanzee, Gorilla, Gibbon, Monkey, Galago, Marmoset, Mouse, Rat, Sheep, Hamster, Elephant, Panda, Dog, Bovine, Bat, Horse, Pig, Guinea pig (100%), Opossum, Turkey, Chicken, Xenopus, Drosophila (92%), Orangutan, Beetle (90%), Trout, Stickleback, Zebrafish (85%).</p> <p>Type of Immunogen: Synthetic peptide</p>
Specificity:	Human ACVR2B

Product Details

Purification: Immunoaffinity purified

Target Details

Target:	ACVR2B
Alternative Name:	ACTRIIB / ACVR2B (ACVR2B Products)
Background:	Name/Gene ID: ACVR2B Subfamily: Activin/TGFb Family: Protein Kinase Synonyms: ACVR2B, Activin A receptor type IIB, Activin receptor type-2B, ActR-IIB, ACTRIIB, Activin receptor type IIB, Activin A receptor, type IIB, HTX4
Gene ID:	93
NCBI Accession:	NP_001097
Pathways:	Hormone Transport , Cancer Immune Checkpoints

Application Details

Application Notes:	Approved: IHC, IHC-P (10 µg/mL), WB (0.2 - 1 µg/mL) Usage: Western Blot: Suggested dilution at 1 µg/mL in 5 % skim milk / PBS buffer, and HRP conjugated anti-Rabbit IgG should be diluted in 1: 50,000 - 100,000 as secondary antibody.
Comment:	Target Species of Antibody: Human
Restrictions:	For Research Use only

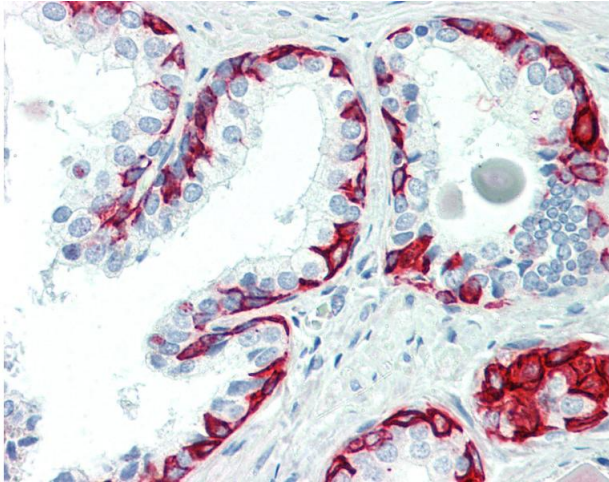
Handling

Format:	Lyophilized
Reconstitution:	Distilled water
Concentration:	Lot specific
Buffer:	Lyophilized from PBS with 2 % sucrose
Handling Advice:	Avoid repeat freeze-thaw cycles.
Storage:	4 °C,-20 °C

Handling

Storage Comment: Long term: -20°C, the use of 50% glycerol is recommended if storing aliquots in -20°C for long term use (up to 1 year)
Short term (less than 1 week): 4°C. Avoid freeze-thaw cycles.

Images



Immunohistochemistry

Image 1. Anti-ACV2B / ACVR2B antibody IHC staining of human prostate. Immunohistochemistry of formalin-fixed, paraffin-embedded tissue after heat-induced antigen retrieval. Antibody concentration 10 ug/ml. This image was taken for the unconjugated form of ...