



[Go to Product page](#)

Datasheet for ABIN2614669  
**anti-ADH7 antibody (FITC)**

1 Image

Overview

Quantity:	100 µg
Target:	ADH7
Reactivity:	Human
Host:	Rabbit
Clonality:	Polyclonal
Conjugate:	This ADH7 antibody is conjugated to FITC
Application:	Western Blotting (WB), ELISA, Immunohistochemistry (IHC), Immunohistochemistry (Paraffin-embedded Sections) (IHC (p))

Product Details

Immunogen:	Recombinant human Alcohol dehydrogenase class 4 mu/sigma chain protein. Type of Immunogen: Recombinant protein
Isotype:	IgG
Specificity:	Human ADH7
Purification:	Caprylic acid and ammonium sulfate precipitation

Target Details

Target:	ADH7
Alternative Name:	ADH7 ( <a href="#">ADH7 Products</a> )
Background:	Name/Gene ID: ADH7

## Target Details

---

Synonyms: ADH7, Alcohol dehydrogenase VII, ADH-4, Alcohol dehydrogenase-7, Gastric alcohol dehydrogenase, Retinol dehydrogenase

Gene ID: 131

## Application Details

---

Application Notes: Approved: ELISA, IHC, IHC-P, WB

Usage: The applications listed have been tested for the unconjugated form of this product. Other forms have not been tested.

Comment: Target Species of Antibody: Human

Restrictions: For Research Use only

## Handling

---

Format: Liquid

Concentration: Lot specific

Buffer: PBS, pH 7.4, 0.03 % Proclin 300, 50 % glycerol.

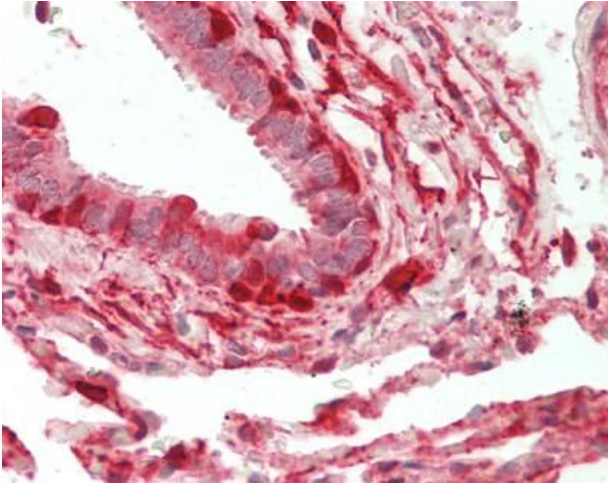
Preservative: ProClin

Precaution of Use: This product contains ProClin: a POISONOUS AND HAZARDOUS SUBSTANCE which should be handled by trained staff only.

Handling Advice: Avoid freeze-thaw cycles.

Storage: -20 °C, -80 °C

Storage Comment: Aliquot and store at -20°C or -80°C. Avoid freeze-thaw cycles.



#### Immunohistochemistry (Paraffin-embedded Sections)

**Image 1.** Human Lung, Respiratory Epithelium: Formalin-Fixed, Paraffin-Embedded (FFPE). This image was taken for the unconjugated form of this product. Other forms have not been tested.