

Datasheet for ABIN2616084

anti-AMY1A antibody (AA 16-511) (Biotin)[Go to Product page](#)**1** Image

Overview

Quantity:	100 µL
Target:	AMY1A
Binding Specificity:	AA 16-511
Reactivity:	Mouse
Host:	Rabbit
Clonality:	Polyclonal
Conjugate:	This AMY1A antibody is conjugated to Biotin
Application:	Western Blotting (WB)

Product Details

Immunogen:	Recombinant AMY1 (Gln16-Ile511) expressed in E. coli.
	Type of Immunogen: Recombinant protein
Isotype:	IgG
Specificity:	Mouse AMY1A / Salivary Amylase
Purification:	Affinity purified

Target Details

Target:	AMY1A
Alternative Name:	AMY1A / Salivary Amylase (AMY1A Products)

Target Details

Background:	Name/Gene ID: AMY1A Synonyms: AMY1A, Alpha-amylase 1, Glycogenase, AMY1, Amylase, alpha 1A (salivary), Amylase, alpha 1A salivary, Amylase, salivary, alpha-1A, Salivary amylase alpha 1A, Salivary alpha-amylase, Salivary Amylase
-------------	--

Gene ID:	276
----------	-----

Application Details

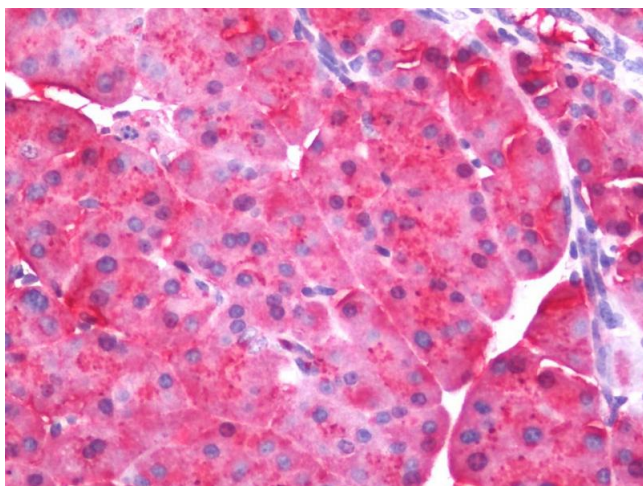
Application Notes:	Approved: WB (1:100 - 1:400) Usage: The applications listed have been tested for the unconjugated form of this product. Other forms have not been tested.
--------------------	--

Comment:	Target Species of Antibody: Mouse
----------	-----------------------------------

Restrictions:	For Research Use only
---------------	-----------------------

Handling

Format:	Liquid
Concentration:	Lot specific
Buffer:	PBS, pH 7.4, 0.02 % sodium azide, 50 % glycerol.
Preservative:	Sodium azide
Precaution of Use:	This product contains Sodium azide: a POISONOUS AND HAZARDOUS SUBSTANCE which should be handled by trained staff only.
Storage:	4 °C, -20 °C, -80 °C
Storage Comment:	Store frozen product at or below -20°C. Thawed product may be stored for 2-4 weeks at 4°C. For optimal storage, aliquot to smaller portions and store at -20°C to -70°C. Avoid freeze-thaw cycles.



Immunohistochemistry

Image 1. Human Pancreas: Formalin-Fixed, Paraffin-Embedded (FFPE). This image was taken for the unconjugated form of this product. Other forms have not been tested.